

## **Lancashire County Council**

### **Children's Services Scrutiny Committee**

**Wednesday, 26th July, 2017 at 2.00 pm in Cabinet Room 'C' - The Duke of Lancaster Room, County Hall, Preston**

#### **Agenda**

##### **Part I (Open to Press and Public)**

<b>No.</b>	<b>Item</b>	
------------	-------------	--

<b>1.</b>	<b>Apologies</b>	
-----------	------------------	--

<b>2.</b>	<b>Disclosure of Pecuniary and Non-Pecuniary Interests</b>	
-----------	--	--

Members are asked to consider any Pecuniary and Non-Pecuniary Interests they may have to disclose to the meeting in relation to matters under consideration on the Agenda.

<b>3.</b>	<b>Constitution: Membership; Chair and Deputy Chair; and Terms of Reference of the Children's Services Scrutiny Committee</b>	(Pages 1 - 10)
-----------	---	----------------

<b>4.</b>	<b>Minutes from the meeting held on 1 March 2017</b>	(Pages 11 - 18)
-----------	--	-----------------

<b>5.</b>	<b>Lancashire Wellbeing, Prevention and Early Help Offer</b>	(Pages 19 - 92)
-----------	--	-----------------

<b>6.</b>	<b>Work Plan 2017/18</b>	(Pages 93 - 110)
-----------	--------------------------	------------------

<b>7.</b>	<b>Urgent Business</b>	
-----------	------------------------	--

An item of urgent business may only be considered under this heading where, by reason of special circumstances to be recorded in the Minutes, the Chair of the meeting is of the opinion that the item should be considered at the meeting as a matter of urgency. Wherever possible, the Chief Executive should be given advance warning of any Member's intention to raise a matter under this heading.

**8. Date of the Next Meeting and Future Meeting Dates**

The next meeting of the Children's Services Scrutiny Committee is due to be held on Wednesday 6 September, 2pm in Cabinet Room C, County Hall, Preston.

Future meetings of the Committee for 2017/18 municipal year are as follows:

- 18 October
- 6 December
- 31 January 2018
- 14 March 2018
- 11 April 2018
- 22 May 2018

All meetings will commence at 2pm in Cabinet Room C, County Hall.

I Young  
Director of Governance,  
Finance and Public Services

County Hall  
Preston

## **Children's Services Scrutiny Committee**

Meeting to be held on 26 July 2017

Electoral Division affected: None
--------------------------------------

### **Constitution: Membership; Chair and Deputy Chair; and Terms of Reference of the Children's Services Scrutiny Committee**

(Appendix 'A' refers)

Contact for further information:

Samantha Parker, 01772 538221, Legal and Democratic Services

[sam.parker@lancashire.gov.uk](mailto:sam.parker@lancashire.gov.uk)

#### **Executive Summary**

This report sets out the constitution, membership, chair and deputy chair and terms of reference of the Children's Services Scrutiny Committee for the municipal year 2017/18.

#### **Recommendation**

The Committee is asked to note:

- i. The appointment of County Councillors Andrea Kay and Nikki Hennessy as Chair and Deputy Chair of the Committee for the remainder of the 2017/18 municipal year;
- ii. the new Membership of the Committee following the County Council's Annual Meeting on 25 May 2017; and
- iii. the updated Terms of Reference of the Committee

#### **Background**

- i) Constitution and Membership of the Children's Services Scrutiny Committee

The Full Council, at its meeting on 25 May 2017, agreed that the Children's Services Scrutiny Committee shall comprise 12 County Councillors (on the basis of 7 Conservative, 4 Labour and 1 Liberal Democrat) and 5 non-voting co-opted members.

It was also agreed that County Councillor nominations to serve on the Committee should be submitted to the Director of Governance, Finance and Public Services by the respective Political Groups. Accordingly, the membership of the Committee, as

confirmed by the Political Group Secretaries and the Children's Partnership Boards is as follows:

County Councillors (12):

I Brown	D Howarth
A Cheetham	A Kay
J Cooney	H Khan
L Cox	J Rear
A Gardiner	D Smith
N Hennessy	M Tomlinson

Non-Voting Co-Opted Members (5)

Children's Partnership Board – Hyndburn, Ribble Valley, Rossendale – Elaine Shinks  
Children's Partnership Board – Burnley, Pendle – Catherine Swift  
Children's Partnership Board – Fylde, Wyre, Lancashire North – Alison Taylor  
Children's Partnership Board – Chorley, South Ribble, West Lancs – Debbie Wilson  
Children's Partnership Board – Preston – TBC\*

(\*indicates that at the time the agenda was published, a nominee was yet to be confirmed by the Children's Partnership Board, Preston)

In addition, the Committee will continue to include a representative nominated by the Youth Council with full voting rights.

The Full Council also appointed County Councillors Andrea Kay and Nikki Hennessy as Chair and Deputy Chair of the Committee for the remainder of the 2017/18 municipal year.

ii) Terms of Reference

New Terms of Reference for all the Scrutiny Committees were approved under the County Council's urgent business procedure on 20 June 2017 and are set out at Appendix A to this report for information. The Committee will note that paragraphs one to 10 on the first two pages of the appendix apply to all Scrutiny Committees, with the subsequent paragraphs under each sub-heading relating to each Committee.

**Consultations**

N/A

**Risk Management**

There are no risk management implications arising from this item.

**Local Government (Access to Information) Act 1985**  
**List of Background Papers**

Paper	Date	Contact/Directorate/Ext
Agenda and minutes of the meeting of Full Council	25 May 2017	Dave Gorman, Legal and Democratic Services 01772 534261
Constitutional Amendments	20 June 2017	Chris Mather, Legal and Democratic Services 01772 533559
Reason for inclusion in Part II, if appropriate		
N/A.		



## Appendix A

### Part 2 – Article 5 (Overview and Scrutiny)

The council has established the following Overview and Scrutiny Committees:

<b>Committee</b>	<b>Responsibility</b>	<b>Membership</b>
Internal Scrutiny Committee	Review and Scrutinise decisions, actions and work of the Council	12 County Councillors
Health Scrutiny Committee	Statutory responsibility for scrutiny of adult and universal health services	12 County Councillors, plus 12 non-voting co-opted members, nominated by the 12 district councils
Children's Services Scrutiny Committee	Review and scrutinise children and young people's services including the statutory powers of a scrutiny committee as they relate to the NHS.	12 County Councillors, one non-voting co-opted youth council representative, and five non-voting district council members with one member being nominated by each Children's Partnership Board
Education Scrutiny Committee	Review and scrutinise issues around education services provided by the council including those education functions of a Children's Services authority.	16 County Councillors and 5 co-optees, (comprising three Church representatives and two parent governor representatives) who shall have voting rights in relation to any education functions which are the responsibility of the Executive
External Scrutiny Committee	Review and scrutinise issues, services and activities carried out by external organisations	12 County Councillors

#### **All Overview and Scrutiny Committees have the following Terms of Reference:**

1. To review decisions made, or other action taken, in connection with the discharge of any functions which are undertaken by the Cabinet collectively, or in the case of urgent decisions which cannot await a Cabinet meeting by the Leader of the Council (or in his/her absence the Deputy Leader) and the relevant Cabinet Member, or Cabinet committees.

2. To make reports or recommendations to the Full Council, the Cabinet, the Leader, Deputy Leader or other Cabinet Members as necessary or Cabinet committees with respect to the discharge of any functions which are undertaken by them or in respect of any functions which are not the responsibility of the Cabinet.
3. To hold general policy reviews and to assist in the development of future policies and strategies (whether requested by the Full Council or the Cabinet, individual Cabinet members, Cabinet committees, or decided by the Committee itself) and, after consulting with any appropriate interested parties, to make recommendations to the Cabinet, individual Cabinet members, Cabinet committees, Full Council or external organisations as appropriate.
4. To consider any matter brought to it following a request by a County Councillor or a Co-optee of the Committee who wishes the issue to be considered.
5. To consider requests for "Call In" in accordance with the Procedural Standing Orders – Overview and Scrutiny Rules at Appendix C – Appendix 3 of the Constitution
6. To request a report by the Cabinet to Full Council where a decision which was not treated as being a key decision has been made and the Overview and Scrutiny Committee is of the opinion that the decision should have been treated as a key decision
7. To request the Internal Scrutiny Committee to establish task groups and other working groups and panels as necessary.
8. To request that the Internal Scrutiny Committee establish as necessary joint working arrangements with district councils and other neighbouring authorities
9. To invite to any meeting of the Committee and permit to participate in discussion and debate, but not to vote, any person not a County Councillor whom the Committee considers would assist it in carrying out its functions.
10. To require any Councillor, an Executive Director or a senior officer nominated by him/her to attend any meeting of the Committee to answer questions and discuss issues.

### **Internal Scrutiny Committee**

1. To review and scrutinise all services provided by the authority, unless specifically covered by the Terms of Reference of another Overview and Scrutiny Committee.



2. To consider matters relating to the general effectiveness and development of Overview and Scrutiny in the authority including training for county councillors and co-optees.
3. To consider requests from the other Overview and Scrutiny Committees on the establishment of task groups, and to establish, task groups, and other working groups and panels as necessary, as well as joint working arrangements with District councils and other neighbouring authorities including joint committees to exercise the statutory function of joint health scrutiny committees under the NHS Act 2006.
4. To determine which Overview and Scrutiny Committee considers a particular matter where this is not clear.
5. To establish arrangements for the scrutiny of member development, and receive reports from the Member Development Working Group.
6. To recommend the Full Council to co-opt on to a Committee persons with appropriate expertise, without voting rights

### **Children's Services Scrutiny Committee**

1. To scrutinise matters relating to services for Children and Young People delivered by the authority and other relevant partners.

*The following provisions relating to scrutiny of health and social care relate to services for children and young people:*

2. To review and scrutinise any matter relating to the planning, provision and operation of the health service in the area and make reports and recommendations to NHS bodies as appropriate,
3. In reviewing any matter relating to the planning, provision and operation of the health service in the area, to invite interested parties to comment on the matter and take account of relevant information available, particularly that provided by the Local Healthwatch
4. The review and scrutinise any local services planned or provided by other agencies which contribute towards the health improvement and the reduction of health inequalities in Lancashire and to make recommendations to those agencies, as appropriate
5. In the case of contested NHS proposals for substantial service changes, to take steps to reach agreement with the NHS body
6. In the case of contested NHS proposals for substantial service changes where agreement cannot be reached with the NHS, to refer the matter to the relevant Secretary of State.

7. To refer to the relevant Secretary of State any NHS proposal which the Committee feels has been the subject of inadequate consultation.
8. To scrutinise the social care services provided or commissioned by NHS bodies exercising local authority functions under Section 31 of the Health Act 1999.
9. To draw up a forward programme of health scrutiny in consultation with other local authorities, NHS partners, the Local Healthwatch and other key stakeholders.
10. To acknowledge within 20 working days to referrals on relevant matters from the Local Healthwatch or Local Healthwatch contractor, and to keep the referrer informed of any action taken in relation to the matter
11. To require the Chief Executives of local NHS bodies to attend before the Committee to answer questions, and to invite the chairs and non-executive directors of local NHS bodies to appear before the Committee to give evidence.
12. To invite any officer of any NHS body to attend before the Committee to answer questions or give evidence.

## **Education Scrutiny Committee**

1. To scrutinise matters relating to education delivered by the authority and other relevant partners.
2. To fulfil all the statutory functions of an Overview and Scrutiny Committee as they relate to education functions of a Children's Services Authority.

## **Health Scrutiny Committee**

1. To scrutinise matters relating to health and adult social care delivered by the authority, the National Health Service and other relevant partners.
2. In reviewing any matter relating to the planning, provision and operation of the health service in the area, to invite interested parties to comment on the matter and take account of relevant information available, particularly that provided by the Local Healthwatch
3. In the case of contested NHS proposals for substantial service changes, to take steps to reach agreement with the NHS body
4. In the case of contested NHS proposals for substantial service changes where agreement cannot be reached with the NHS, to refer the matter to the relevant Secretary of State.

5. To refer to the relevant Secretary of State any NHS proposal which the Committee feels has been the subject of inadequate consultation.
6. To scrutinise the social care services provided or commissioned by NHS bodies exercising local authority functions under the Health and Social Care Act 2012.
7. To request that the Internal Scrutiny Committee establish as necessary joint working arrangements with district councils and other neighbouring authorities.
8. To draw up a forward programme of health scrutiny in consultation with other local authorities, NHS partners, the Local Healthwatch and other key stakeholders.
9. To acknowledge within 20 working days to referrals on relevant matters from the Local Healthwatch or Local Healthwatch contractor, and to keep the referrer informed of any action taken in relation to the matter.
10. To require the Chief Executives of local NHS bodies to attend before the Committee to answer questions, and to invite the chairs and non-executive directors of local NHS bodies to appear before the Committee to give evidence.
11. To invite any officer of any NHS body to attend before the Committee to answer questions or give evidence.
12. To recommend the Full Council to co-opt on to the Committee persons with appropriate expertise in relevant health matters, without voting rights.
13. To establish and make arrangements for a Health Steering Group the main purpose of which to be to manage the workload of the full Committee more effectively in the light of the increasing number of changes to health services.

## **External Scrutiny Committee**

1. To review and scrutinise issues, services or activities carried out by external organisations including public bodies, the voluntary and private sectors, partnerships and traded services which affect Lancashire or its inhabitants, and to make recommendations to the Full Council, Cabinet, Cabinet Members, Cabinet committees or external organisations as appropriate.
2. To review and scrutinise the operation of the Crime and Disorder Reduction Partnership in Lancashire in accordance with the Police and Justice Act 2006 and make reports and recommendations to the responsible bodies as appropriate

3. In connection with 2. above, to require an officer or employee of any of the responsible bodies to attend before the Committee to answer questions
4. To co-opt additional members in accordance with the Police and Justice Act 2006 if required, and to determine whether those co-opted members should be voting or non-voting
5. To review and scrutinise the exercise by risk management authorities of flood risk management functions or coastal erosion risk management functions which may affect the local authority's area

## Lancashire County Council

### Children's Services Scrutiny Committee

**Minutes of the Meeting held on Wednesday, 1st March, 2017 at 4.30 pm in Cabinet Room 'C' - The Duke of Lancaster Room, County Hall, Preston**

#### **Present:**

County Councillor Gina Dowding (Chair)

#### **County Councillors**

L Beavers	A Jones
A Cheetham	M Otter
C Dereli	S Pryn
J Gibson	D T Smith
C Henig	

#### **Co-opted members**

Alison Taylor, Fylde and Wyre CCG  
Debra Wilson, Chorley, South Ribble and West Lancs  
Children's Partnership Board

County Councillor Tony Jones replaced County Councillor Susie Charles for this meeting,

#### **1. Apologies**

Apologies were received from County Councillors Munsif Dad, Graham Gooch and Dorothy Lord; Elaine Shinks, Children's Partnership Board - Hyndburn, Rossendale and Ribble Valley; and Catherine Swift, Children's Partnership Board - Burnley and Pendle.

#### **2. Disclosure of Pecuniary and Non-Pecuniary Interests**

None were disclosed.

#### **3. Minutes from the meeting held on 18 January 2017**

**Resolved:** The minutes from the meeting held on the 18 January 2017 were confirmed as an accurate record and signed by the chair.

#### **4. Preventing Childhood Obesity**

The Chair welcomed Sakhti Karunanithi, the Director of Public Health and Wellbeing to the meeting. The Committee was provided with a presentation regarding childhood obesity.

The definition of child excess weight and obesity. Children with a body mass index (BMI) greater than or equal to the 95<sup>th</sup> centile of the British 1990 growth reference BMI distribution had been classified as obese. Children with a BMI greater than or equal to the 85<sup>th</sup> centile of the British 1990 growth reference BMI distribution had been classified as overweight including obese (excess weight).

The situation in Lancashire was that the National Child Measurement Programme data (2014/15) showed in Lancashire that in the under 12s Age Group the prevalence in reception age children was 9% and 18% in year 6 (England figures 9% and 19% respectively).

In 2008/09 the obesity prevalence in Lancashire for reception age children was 9.0%. This cohort was now the year 6 population (2014/15) with an obesity prevalence that had doubled to 18%.

Hyndburn (11%) and Lancaster (11%) both had significantly higher rates of obesity in reception age children, compared to England.

Burnley (22%) had a significantly higher rate of obesity in year 6 children compared to England, while Chorley (17%), South Ribble (15%), Ribble Valley (14%) and Fylde (13%) were significantly lower.

The population based childhood obesity prevention strategy had been set up within Government. It included population wide policies and initiatives to do with food, environment, and, physical activity.

There were also community based interventions such as:

- Engagement
- Governance
- Early Years
- Schools
- Other child care settings

A plan of action had been set up. There was a soft drinks levy payable on drinks with added sugar. The amount of tax payable depended on the volume and overall sugar content of soft drinks which companies either produced or imported. There was a lot of focus put on hidden sugar in food and drink and there was commitment to take out sugar in products. There was an incentive to promote businesses to be healthier and also make school food healthier.

The Health and Wellbeing Strategy had been developed by Lancashire's Health and Wellbeing Board and its vision was that every citizen in Lancashire would enjoy a long and healthy life. Part of the Sustainability and Transformation Plan (STP) was to create healthy environments in health and care settings to improve diets and support action to reverse trends in childhood obesity. A Unicef baby friendly mark had been achieved by Lancashire's children centres and health settings. There was now a Healthy Weight and Active Lifestyles service available in Lancashire. There were also various community initiatives around childhood obesity and there were campaigns as well such as Be Food Smart which was about making people aware of how much sugar and fat was in our food.

LCC welcomed opportunities to work with early years and schools on childhood obesity, and also work with businesses and dentists. Another opportunity on tackling childhood obesity was through 'Health as a Social Movement'. This was a programme worked to support development and spread of social movements in health and care. There was continued advocacy from LCC for a comprehensive obesity strategy.

Questions and comments by the Committee in relation to the report were as follows:

- Regarding resources some of the key resources were engagement with head teachers. Health visitors were also a key resource. In terms of LCC's own staff there were really only two people involved with Public Health function linked with supporting schools and they were at a strategic level in terms of commissioning and creating partnerships. There were various groups involved with kick-starting community initiatives and healthy eating campaigns such as mums' networks and some were members grants related initiatives.
- Members were informed there were national campaigns around healthy eating. LCC tended to choose its local campaigns to be in alignment with the national campaigns. A recent campaign was 'Be Food Smart'. LCC was encouraging people to volunteer in supporting these campaigns and looking at social marketing.
- Confidence in the measuring of obesity such as the BMI was queried by Members. They were informed that BMI was one of the most robust tools to measure obesity.
- The Committee stated that many parents thought they were giving their children healthy food and were totally unaware of the hidden sugar content. There was a campaign called 'Be Food Smart' which people could choose to engage in. The Government had a role to raise awareness about what was in the food and what was a healthy food. There was an initiative to increase the access to dentists for children to receive regular, routine checks.

- LCC had been regularly working with food banks for a number of years. It was a partnership agenda with district councils, the voluntary community faith sector, and, church groups. The partnership was working towards access to free breakfasts in deprived areas of Lancashire.
- It was pointed out to the Committee the label 'obese' was not used anymore, instead the term 'excess weight' was used.
- Children faced stress at school and bullying, and, it was noted that stress and obesity were definitely linked.
- Members felt that school meals had changed for the better and enquired what the status was in schools regarding milk. Children's Universal Services were pushing milk and water in schools. Water and milk were the recommended drinks for children.
- Regarding the STP the Committee enquired where it was up to with local delivery plans such as 'Our Health Our Care' and 'Transforming Lives'. Prevention strategy at local delivery plan level should be flagged up within the STP. Committee was informed it was very early days for the STP. It was stated that nationally there had to be a radical upgrade in prevention. The Children and Young People agenda was a priority in the STP.
- There were no plans at the moment to reduce support for the Baby Friendly Initiative (BFI). All children centres and Lancashire Health Care Visitors were accredited at level 3 nationally..
- Members felt it was important to advocate cooking lessons in schools for all children. Schools should encourage healthier lifestyles. Deprived areas had the greatest problems with healthy lifestyles. Schools were enthusiastic about health and wellbeing.
- It was noted that fresh meat and vegetables were a lot more expensive than pre-packed food. Education on healthier living was fine as long as people had the means. Families had a lot of pressures around money.
- LCC was working with individuals and families in promoting a healthy diet and encouraging them to be more active. It also had good initiatives at a community level for healthy living. There was also a national policy on healthy lifestyle.
- The Committee requested the Government acted on the Sugar Tax and greater pressure put on the voluntary agreement the Government was working towards.
- As a committee concerned with children's health, Members wanted to ensure positive attitudes to healthy eating were promoted.



- There were concerns about the marketing of food by supermarkets and the affordability of healthy foods.
- It was noted that there was less childhood obesity with breastfed babies. There was greater scope for success with this. There was 69% of babies breastfed at birth but this dropped to 30% after 6 – 8 weeks.

**Resolved:**

- 1) The Committee note the report
- 2) The Committee ask the Government for action on the Sugar Tax. It was agreed that Sakthi would draft a letter on behalf of the Committee

## **5. SEND DoLS Sub-Group Update**

The Chair welcomed Brendan Lee, Head of Service Special Educational Needs and Disability, to the meeting.

The Committee was informed that the Mental Capacity Act (MCA) 2005 directly impacted on work undertaken within the Special Educational Needs and Disability (SEND) service and subsequently officers had to have due regard for the remits of this legislation. The MCA had far reaching implications for the SEND service in relation to decisions that young people using their service were making with regard to their education and care. The MCA interacted with other key pieces of legislation such as the Children Act 1989 and SEND Code of Practice: 0 to 25 years.

Within SEND, good progress had been made in a number of areas of the Work Plan (September 2016). Pathways had been developed in relation to how the Children with Disabilities Team (CwD) and Integrated Assessment and Monitoring Team (IA&M) work with children and young people to undertake capacity assessments and, where appropriate, consider what was in their best interests. These were currently being consulted on by a number of practitioners with various areas of expertise. The cohort of young people to whom the MCA was applicable had been identified and the procedure for prioritising these young people was being developed and would be implemented in due course. Training was being commissioned from April 2017. Learning from case law and casework within Lancashire was ongoing and would inform the development of procedures and practice guidance. In the last 12 months the CwD Team had made seven applications to the Court of Protection under the MCA with no criticism received from the work undertaken in these cases. The SEND Service had successfully built good links with Lancashire's Mental Capacity Act MCA Co-Ordinator in the Deprivation of Liberty Safeguards Team who was providing advice and guidance where requested and had strengthened links with Legal Services to offer on-

going support. In addition the MCA Working Group incorporated professionals with a range of backgrounds and knowledge.

Questions and comments in relation to the report were as follows:

- The SEND team had to consider if the children had the mental capacity to make their own decisions and understand the consequences of their actions before the team looked at deprivation of liberty.
- Regarding the Mental Capacity Act 2005 (MCA), concerns were expressed over deprivation of liberty for children. The primary goal of the SEND team was to protect the children. The MCA was about protecting liberty. It was very challenging for foster services and care services. There was a huge piece of legislation in regards to the MCA and deprivation of liberty with many complexities attached to it.
- Members felt there was scope for a briefing on the MCA and deprivation of liberty for all County Councillors. The SEND DoLs Sub-Group had felt that that this was a difficult and complex area of work and asked how far LCC could go as a local authority ensuring all the procedures were in place and children were protected

#### **Resolved:**

1. The Committee noted the progress made so far in relation to the implementation of the MCA within SEND and the development of policy, procedures and processes being developed to support compliant practice and positive outcomes for young people.
2. The Committee requested an update report in six months.

#### **6. Work Plan**

The Committee was presented with the work plan which included current sub-group reviews.

In consultation with the Chair it was agreed that the next meeting of the Committee on 12<sup>th</sup> April be cancelled. The next meeting of the Committee would be on 14<sup>th</sup> June at 2:00pm.

The Chair would send an email to Members of the Committee inviting them to respond and give feedback on specific issues, specifically around working groups, training and membership of the Committee.

**Resolved:** The Committee noted and commented on the report.

**7. Urgent Business**

There were no items of urgent business declared.

**8. Date of the Next Meeting**

Next meeting of the Committee to take place on the 14 June 2017 at 2:00pm,  
Cabinet Room C, County Hall, Preston.

I Young  
Director of Governance, Finance  
and Public Services

County Hall  
Preston



## **Children's Services Scrutiny Committee**

Meeting to be held on Wednesday, 26 July 2017

Electoral Division affected: (All Divisions);
--

## **Lancashire's Wellbeing, Prevention and Early Help Offer**

(Appendices A – M refer)

Contact for further information:

Helen Green, Tel: 01772 530974, Quality Review Officer,

helen.green@lancashire.gov.uk

### **Executive Summary**

The case for effective Wellbeing, Prevention and Early Help is well documented and understood and has been robustly made in a number of key national reports. This is that Early Help for children, young people and their families does more to reduce the prevalence of abuse and neglect than reactive (costly) specialist statutory services. That it focuses on impacting the wider determinants for health, including economic, social and environmental improvement in both local and national context. This paper provides an update on Lancashire's Wellbeing, Prevention & Early Help offer.

### **Recommendation**

The Committee are requested to note and comment on the contents of this paper.

### **Background and Advice**

The importance of Early Help in enabling children and families to reach their full potential has been set out in a number of Government reports published nationally to improve our understanding and inform service developments when working with children and their families.

- Fair Society, Healthy Lives (The Marmot Review (2010))
- The Foundation Years: Preventing poor children becoming poor adults (Frank Fields (2010))
- Early intervention: The Next Steps (Graham Allen MP (2011))
- The Munro Review of Child Protection: A Child Centred System (Professor Eileen Munro (May 2011))
- The Early Years: Foundations for life, health and learning (Tickell Review (2011))

These published reports promote Early Help as a way of working with children, young people and families, offering them support at the earliest opportunity to build their resilience and increase their ability to manage challenging circumstances before they become a problem which requires more intensive specialist support.

There is also a strong economic imperative for Prevention and Early Help. Social problems and intergenerational disadvantage place a significant financial burden on society. Youth unemployment alone is estimated to cost the economy in excess of £10million a day. Tackling the underlying causes of social problems, through prevention and early help, could realise significant saving for the public purse. Studies have shown that every £1 spent on prevention and early help can realise savings of up to £10+. Investing resources in this approach has the potential to combine improved outcomes with greater efficiency.

A collaborative approach is essential for delivering services focused on Prevention and Early Help. Not just because integrated services are better able to change lives and realise greater efficiencies, but because the benefits may not necessarily accrue to organisations who operate in isolation. A shared strategic approach will ensure partners remain focussed on the potential for Prevention and Early Help to improve outcomes for all parties in the long term.

### **Why do we need an Early Help Offer?**

The majority of children and young people in Lancashire achieve good outcomes - enjoying good health, feeling safe, achieving well at school, engaging in purposeful and positive activities and having good prospects for future education and employment. However, there is a significant minority of children and young people for whom the predicted outcomes remain poor:

- 18% of children living in deprived households
  - 39 wards in top 10% most deprived nationally – affecting 10 out of 12 Lancashire districts (except for Fylde and Ribble Valley). (DCLG, 2015)
- 47,155 children in families in receipt of Child Tax Credits (<60% median income) or IS/JSA. (HM Revenue and Customs, 2014)
- 1 in 7 pregnant mothers smoke during pregnancy – it is just over 1 in 10 nationally. (HSCIC, 2016)
- Just under 70% of mothers initiate breastfeeding after birth. (NHS England, 2014/15)
- During 2015/16, there were 2,179 MARAC (Multi-Agency Risk Assessment Conference) cases; this was an increase of 4.8% on the previous year (or 2,079 cases during 2014/15). Children are exposed to abuse in the home and there were 2,519 CYP included in these MARAC cases. More recent data

suggests the first three quarters of 2016/17 there have been 1,563 reported MARAC cases. (Lancashire County Council, 2017)

- There are 1,864 children looked after in Lancashire as of March 2017. 63% of children were looked after as a result of abuse or neglect and 23% were a result of family stress or dysfunction. (Lancashire County Council, 2017)
- Infant mortality is still higher than the national average with rates in Pendle, Chorley and Burnley amongst the highest in the country. (PHE, 2013-2015)
- The oral health of children and young people under the ages of 5 and 12 are poor in many areas of Lancashire.

## Wellbeing, Prevention and Early Help Service Vision and Purpose



The Wellbeing, Prevention and Early Help Service (WPEHS) brings together a range of former services that work with children, young people and families, including Children's Centres, Young People's Service, Prevention and Early Help and Lancashire's response to the national Troubled Families Unit programme. By doing this, the service is able to offer a wide range of support across the 0 - 19yrs+ age range (25 years for Special Educational Needs and Disabilities) with a whole family approach, and ensure that the needs of children, young people and families who are vulnerable to poor outcomes are identified early and that those needs are met by agencies working together effectively and in ways that are shaped by the views and experiences of the children, young people and families themselves.

Strong universal services help our children, young people and families to help themselves to find solutions to problems or prevent problems developing, through building resilience. Universal services are those that are routinely available to all children, young people and families, which can provide support and are often the places where emerging issues/difficulties are first identified, or where families may first ask for help and we will continue to work in partnership with providers delivering universal services, such as Midwives, Health Visitors, School Nurses, Schools, Early Years settings, Police, Lancashire Fire & Rescue Service and the Voluntary Community Faith sector.

The vision for Lancashire's Early Help offer is therefore to secure a county-wide approach within which all partners coordinate, prioritise and maximise their collective efforts to enable children, young people and families to achieve success, resist stress, manage change and uncertainty, and make safe decisions about their future. It provides a framework to support partners in re-shaping existing services, to work together more effectively, utilising existing resources in a more integrated way in order to secure better outcomes for families.

At the heart of this approach is a commitment to actively involve children, young people and families in the assessment of need and action planning to meet those needs – to put children, young people and families at the centre of our planning. Effective Early Help can only be achieved if we work together to ensure services are co-ordinated, integrated, accessible and personalised to the needs and strengths of individual children, young people and their families. This involves changing the way we deliver services by working in an integrated way, breaking down professional barriers that may get in the way of delivering the best possible services and by adopting a 'family centred' approach to all that we do.

### **Statutory Remit of the Wellbeing, Prevention and Early Help Service for Children, Young People and Families**

The County Council's statutory duties relevant to this service include:

- Delivering a 'sufficient' children's centre offer to meet local need so far as this is reasonably practicable (Childcare Act 2006). This is based on population and defined reach areas, with a consideration to retain universal services, whilst concentrating and targeting those children and families who are the most disadvantaged.
- Securing young people's access to 'sufficient' educational and recreational leisure time activities and facilities for the improvement of young people's wellbeing through the delivery of a 'Youth Offer' (Section 507b of the Education and Inspection Act 2006). This includes the duty on the local authority to consult young people about positive activities and other decisions affecting their lives and to publicise information on what positive activities are available in the county/local areas.
- Making available to young people below the age of 19 and relevant young adults (i.e. those aged 20 and over but under 25 with learning difficulties) support that will encourage, enable or assist them to participate in education and training (Section 68 of the Education and Skills Act 2008) and ensure that they promote the effective participation in education or training of young person's 16-17yrs and make arrangements to establish (so far as it is possible to do so) the identities of those young people who are failing to fulfil the duty to participate in education or training – thereby reducing the numbers of NEET (Not in Employment, Education or Training) young people (Raising the Participation Age).



## **Troubled Families Programme**

The Wellbeing, Prevention and Early Help Service (WPEHS) is responsible for delivering Lancashire's response to the national Troubled Families Programme. This programme aims to improve the life chances of 400,000 families nationally who are experiencing multiple issues in the family unit. Families are deemed to be eligible for 'attachment' to the programme if they have two or more identified issues from the six criteria below:

1. parents or children involved in crime / anti-social behaviour;
2. children who have not been attending school regularly;
3. children who need help, identified as in need or subject to a child protection plan;
4. adults out of work or at risk of financial exclusion or young people at risk of worklessness;
5. families affected by domestic violence and abuse;
6. parents or children with a range of health problems

The WPEHS has embedded the principles of the national programme into service delivery. This means that all families attached to the programme receive coordinated support delivered by a Lead Professional (LP) who is the main point of contact for the family. Lancashire has been set a target of attaching 8,620 families to the programme by March 2020. Local authorities receive £1,000 for each family attached to the programme with £800 paid on a payment-by-results basis (for a maximum of 8,620) where there is clear evidence that all identified issues have been resolved and the change has been sustained.

## **Wellbeing, Prevention & Early Help in the Multi Agency Safeguarding Hub (MASH)**

There are three Early Help officers who support decision making on "Contacts" made to MASH that do not meet the Children's Social Care (CSC) thresholds.

Data shows that only approximately 30% of Contacts made to MASH meet a threshold at level 3 or 4 on the Lancashire Continuum of Need (CoN); i.e. progress to CSC, with a significant proportion requiring an Early Help assessment (CAF) or further Early Help support.

The role of the Early Help Officers within MASH is as follows: -

- To form part of the locality MASH teams - Central, North and East, and ensure swift step-down to the 12 WPEHS District Teams across Lancashire to ensure that children, young people, their families and carers receive the offer of support that is right for them, in the right place and the right time.
- Act as a conduit between the WPEHS District Teams offering support, guidance and information where necessary.
- Support the multi-agency professionals within MASH by providing information regarding the Early Help offer, including access to commissioned services. They will contribute to the decision making process and offer professional challenge when appropriate.

- Advocate the use of the CAF as a holistic assessment with all multi agencies within and external to MASH.
- Embed the Risk Sensible model within their practice to ensure consistency of language and thresholds.
- Provide multi- agencies in MASH with the information regarding support available within Districts
- Seek consent from parents and young people, where other agencies within MASH have been unable to gain consent, they will interface with the parents and young people to establish as early as possible the needs of the family.
- Maintain accurate records of all cases.
- Work with the MASH Board to produce multi-agency performance indicators to demonstrate the effectiveness of Early Help within the MASH.

### **Wellbeing, Prevention and Early Help Service Delivery Model**

The WPEHS delivery model was presented to Cabinet in February 2015 and it was agreed that the revised service model would be implemented within a financial envelope of £17.23m. The financial envelope has since been revised to £16.85m (excluding Troubled Families Unit income) due to changes in staffing NI and superannuation rates and the centralisation of property budgets. This revised financial envelope still achieves the planned budget savings.

For organisation and management purposes, front facing service delivery is structured around five areas which forms the service delivery footprints for the Wellbeing, Prevention and Early Help Service. The service delivery footprints are;

- Lancaster, Fylde and Wyre
- Preston
- Chorley, South Ribble, and West Lancashire
- Hyndburn, Ribble Valley and Rossendale
- Burnley and Pendle

Staffing resources have been allocated across Neighbourhood Centres in the heart of the community where a range of Early Help services can be accessed, such as Police, Lancashire Fire and Rescue and Health as we embed integrated working. See Appendix A for a full list of all the WPEHS delivery sites and Appendix B for the allocation of staffing resources.

The service operates a flexible programme, largely targeted in response to need, but also including some universal drop-in services and groups. The service has developed a core curriculum offer of evidence based interventions based on the provision of 20% universal support and 80% targeted early help for children, young people and families at level 2 on the Lancashire Continuum of Need. Further details of the service methodology can be found at Appendix C and the curriculum offer can be found at D.

The service will be offered in the main to groups and individuals whose needs are our priority and use four principle methods for service delivery;

- One to one key worker support
- Group based programmes operating from neighbourhood centres
- One to one and group based outreach and detached support
- Virtual and digital support, which is accessed for example via telephone, internet, mobile phone and social media

Using outreach and detached delivery is critical and means that there is a wide reach of our services across communities and where appropriate, this can be delivered within families' homes, or from other appropriate settings.

When considering targeting services, Wellbeing, Prevention and Early Help Service will prioritise the following groups/ individual children, young people or families;

- With Special Educational Needs and/or Disabilities or with behaviour difficulties
- Experiencing Neglect
- Workless or at risk of financial exclusion
- With a range of health problems
- Affected by domestic abuse
- Affected by emotional and mental health issues
- Young Parents/ new parents
- Parents who are unlikely to take advantage of universal early childhood services
- Young Carers
- Homeless
- Asylum seekers and refugees
- At risk of and/or having experienced child sexual exploitation
- Who are transient including asylum seekers, economic migrants and traveller communities
- Involved in crime or anti-social behaviour
- Not attending school regularly and at risk of exclusion
- Engaging in / affected by risk taking behaviours
- With protected characteristics as defined by the Equality Act

*(WPEHS will support Children's Social Care cases (including Children in Need (CiN) and those stepping down from social care), where in the best interest of the child/young person, and as part of plans for children and young people looked after by the local authority and those subject to a child protection plan)*

## **Integrated Working Principles**

Making improvements in the integrated delivery of universal and targeted services is critical in ensuring that it is easier for children, young people and families to access the support they need, and where appropriate we will integrate our collective resources within our Neighbourhood Centres. This will require new and innovative

ways of working, making the effective use of our shared resources and improving information sharing.

An Early Action Integrated Team operates in Preston in response to increasing demand on emergency services, statutory services and partner agencies from vulnerable children, families and adults, whose needs require a non-statutory response.

Membership of the team includes WPEHS, Police, Fire, Health, District Councils, Social Care, commissioned services and appropriate Voluntary, Community and Faith Sector (VCFS) organisations. The team operate from one of the WPEHS centres, sharing data systems, intelligence and resources to provide a holistic multi-agency response to requests for support from vulnerable adults and families. Integrated Teams are currently in development across the remaining districts in Lancashire.

The WPEHS works in partnership with providers delivering universal services, such as Midwives, Health Visitors and School Nurses. The WPEHS supports Health Visitors with baby weigh in clinics at WPEHS delivery sites, and with the delivery of health and development checks for 2 year olds.

WPEHS hold joint visits to local nurseries where parents could benefit from accessing free 2 and 3 year old nursery places and offers joint support to new parents with feeding, safer sleeping and play and stimulation for early development.

The WPEHS operates a data sharing agreement with local midwives which facilitate the sharing of information regarding new births which enables the WPEHS to target new families who may need additional support. Links are developing with local GP practices with the WPEHS providing a named contact for each GP surgery. The named contact provides information regarding services available for families and provides a contact point for GP's to discuss potential referrals into the services (see Appendix E).

The WPEHS service also provides a local named contact to Lancashire schools. The named contact supports the school by providing information and advice on services available and how to access these and be a contact point for the school to discuss any emerging issues about any of their pupils. Building these partnerships will ensure that it is easier for children, young people and their families to receive the support that they need as early problems/difficulties arise (see Appendix F).

A key priority for WPEHS is to ensure that children, young people and their families are resilient, aspirational and have the knowledge, capability and capacity to deal with wider factors which affect their health and wellbeing, life chances and economic wellbeing.

To support this priority WPEHS have engaged with Lancashire Adult Learning (LAL) to explore ways in which they are able to enhance the WPEHS offer delivered from Neighbourhood Centres. Additionally, a key focus of the national Troubled Families Programme relates to moving families identified as worklessness towards and into employment.

LAL have developed a "Curriculum Offer" with the Wellbeing Prevention and Early Help Service which provides a range of courses including evidence based family learning programmes and support for families moving towards employment.

The WPEHS actively engages with the VCFS to ensure the best use of resources, to eradicate duplication and ensure local provision is complementary. The WPEHS will pool resources with the VCFS to jointly deliver programmes from WPEHS delivery sites for example the Big Cook Little Cook programme in Hyndburn which focuses on healthy eating and cooking and upskills parents to provide nutritious food on a budget.

The WPEHS also contributes to the support provided for vulnerable target groups and has developed specific targeted service offers for;

- children looked after (CLA)
- children and young people with special educational needs and disabilities (SEND)

See Appendix G for details of the WPEHS offer for Children Looked After (CLA) and Appendix H for details of the WPEHS offer for children and young people with SEND.

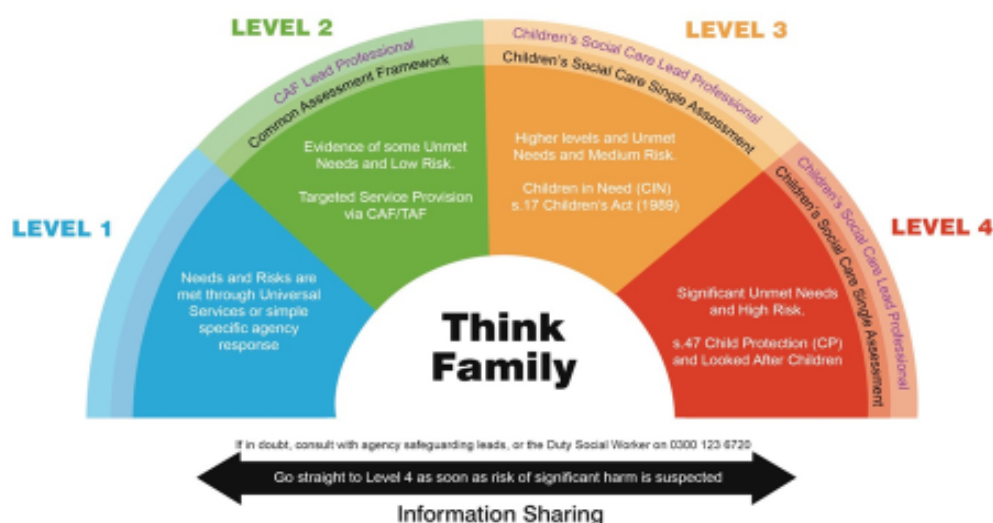
### **Lancashire's Continuum of Need (CoN) and Thresholds Guidance**

The CoN and Thresholds Guidance sets out the levels of need and risk experienced by children, young people and families in Lancashire

It highlights and supports the emphasis on both assessment and planning when working with a family to ensure there is a clear understand of levels of need and risk in order to offer the most appropriate level of support to a family.

# Lancashire Continuum of Need

The complete Lancashire 'Continuum of Need'



The CoN and Thresholds Guidance offers multi-agency practitioners a common language and understanding to identify and describe levels of need and risk.

Level 1	Needs met by universal services i.e. Schools, Health Visitors and School Nurses
Level 2	CAF assessment, Lead Professional from appropriate agency, targeted support at an Early Help Level
Level 3	Section 17- Child In Need. Single Assessment. Lead Professional is a Social Care Professional
Level 4	Section 47- Child Protection or Looked After Children. Single Assessment. Lead Professional is Social Care Professional

## Common Assessment Framework (CAF)

The CAF is a multi-agency assessment and planning tool, designed for use with Children, Young People and their families, including unborn babies, by any practitioner working with a family. In Lancashire the CAF is a Family CAF which is undertaken, with consent, when unmet needs and risk are identified at Level 2 on the Continuum of Need (CoN). The CAF assessment is undertaken utilising the Lancashire Thresholds Guidance and CoN.

The CAF looks at the family's strengths, needs and risk and focuses on empowering families by working alongside them to build resilience and reduce dependency. It enables agencies to follow the Child's journey and enhances ongoing and effective communication between agencies and the family. It facilitates partners to work together in a Team around the Family (TAF) and identifies a Lead Professional (LP)

to ensure a coordinated and joined up approach. It enables practitioners to work alongside families, by 'working with' and not 'doing to'.

The WPEHS work with families is underpinned by the CAF which follows the principles of one family, one worker, and one plan, to achieve the best outcomes for Children, Young People and their Families.

The current number of open CAF's across Lancashire by multi-agency partners is illustrated below;

<b>Agency completing CAF</b>	<b>Number of Open CAFs</b>
Education (incl. Early Years)	6,541
Health	1,127
Housing	5
Other (non LCC)	42
Other LCC Service	272
Police	16
VCFS	368
WPEHS	847
Youth Offending Team	25
<b>Grand Total</b>	<b>9243</b>

The WPEHS delivery adopts the Risk Sensible methodology. Risk sensible sets out a way in which practitioners work with families to identify and manage need and risk at an appropriate level and ensure children and young people are safeguarded against significant harm. It challenges the culture of working in a risk averse way and provides a framework to address this that supports assessment, analysis and management of risk. See Appendix I for full details of the Risk Sensible method.

## **Referral Pathways**

Requests for support come from a number of sources, from other professionals or services, from families or young people themselves.

The Wellbeing, Prevention and Early Help Service operate a one single 'front door' to the service and all requests for support are sent to a central mailbox [preventionearlyhelp@lancashire.gov.uk](mailto:preventionearlyhelp@lancashire.gov.uk). All requests for support received are sent to District teams.

Agreed processes are in place for families that require escalation, 'step up', to children's social care and those that need to de-escalate, 'step down', to early help. See Appendix J for details of the 'step up' process and Appendix K for details of the 'step down' process. Full details of the service pathway can be found at Appendix L.

## **Commissioned Services**

0-19 Healthy Child Programme (Health Visitors and School Nursing)

Lancashire County Council is currently undertaking a procurement exercise for the delivery of its 0-19 (25) years Healthy Child Programme from April 2018. The awarded provider will work collaboratively with the Well-Being, Prevention and Early Help service (WPEHS) delivering services for children, young people and families. Elements of the programme include:

- Public health nursing - including the 4-5-6 service model from the antenatal period up to 19 years for children, young people and families (up to 25 years with SEND).
- Support for all children, young people and families at the four service levels (community, universal, universal plus and universal partnership plus).
- Early identification of need; screening, developmental health reviews, focus on high impact areas, and the provision of the National Child Measurement Programme (NCMP)
- Health improvement with a focus on prevention.

The successful provider, in partnership with WPEHS colleagues, will develop, deliver and lead others in collaborative innovative solutions to meet local need and provide an increased emphasis on prevention at all service levels. Service users will receive a seamless delivery of care, delivered on a population and community based level, which are family centred and delivered by the right person, at the right time and in the right place, to meet individual child and family needs.

The service will deliver an integrated 0-19 (25) Healthy Child Programme as part of a multi-agency team within Lancashire's Neighbourhood Centres with LCC's Wellbeing and Early Help service, making effective use of shared resources, i.e. workforce and training, commissioning, estates, improving information sharing with an ultimate aim of improving outcomes for children, young people and families. The need for early specialist emotional health and wellbeing provision for children and young people together with support for children and young people who have been affected by domestic abuse were identified following completion of a comprehensive needs assessment.

#### Emotional Health and Wellbeing Commissioned Service

During 2017/18 £1.15m funding has been set aside, £650k from Schools Forum together with £500k redirected from Tier 2/3 mental health services to support children, young people and families with low level emotional health and wellbeing needs at level 2, 3 and 4 of the Lancashire Continuum of Need.

The contract is monitored on a quarterly basis by the Wellbeing, Prevention and Early Help service. Systems and processes are in place providing robust reporting, at family level, service level, district level and county level. Quarterly performance reports are produced and shared through established governance arrangements.



## Support for Children and Young People affected by Domestic Abuse commissioned service

The Police & Crime Commissioner (OPCC) is the lead commissioner on behalf of partners for Domestic Abuse services as part of a wider contract titled 'Lancashire Victims Services' which includes services specifically for victims of domestic abuse, rape, Child Sexual Exploitation, forced marriage, honour based violence, Female Genitalia Mutilation, hate crime, young victims of crime and road traffic crime.

The Schools Forum provide funding into the pooled budget to support to children and young people who have either been victims of, or witnessed domestic abuse. The WPEH service can access this support where appropriate. The contract was awarded to Victim Support and is delivered across Lancashire as part of the NEST service.

Full details of the current providers, including details of the delivery model are attached as Appendix M.

### **Outcomes Framework**

We are continuing to prioritise our focus on a shift within the public service workforce towards delivering long-term sustainable outcomes from a short term response culture by developing and nurturing qualities in our staff such as perseverance, resilience, innovation, to enable them to focus on strengthening the capacity and capability of our most vulnerable families.

This enables us to identify as early as possible when vulnerable children, young people or families would benefit from targeted support, long before issues become a problem, working with them to ensure that support offered is;

- Right for them
- Offered in the right place
- Delivered at the right time

It also demonstrates Lancashire's commitment to develop sustainable provision that can build flexibility and resilience across our workforce which is well evidenced and evaluated (including cost benefits) and is able to stand up to scrutiny.

A multi-agency Outcomes Framework has been developed which provides robust measurements to monitor and evaluate the support we offer to families. This also enables us to identify a strategic and management understanding of what interventions work to achieve a positive impact in a sustainable way.

Outcome 1	Outcome 2	Outcome 3	Outcome 4	Outcome 5
Children and young people are safe and protected from harm. ( <i>Children and Young People's Plan Objective 1</i> )	Children, young people and families are resilient, aspirational and have the knowledge, capability and capacity to deal with wider factors which affect their health and wellbeing, life chances and economic wellbeing ( <i>Children &amp; Young People's Plan Objective 2, 3</i> )	Children, young people and their families are helped to live healthy lifestyles, engage in positive social activities and make healthy choices ( <i>Children &amp; Young People's Plan Objectives 2, 4, 5</i> )	Children, young people and families health is protected from major incidents and other threats whilst reducing health inequalities ( <i>Children &amp; Young People's Plan Objective 1, 4</i> )	Targeting those in more disadvantaged communities, the number of children, young people and families living with preventable ill health and dying prematurely is reduced ( <i>Children &amp; Young People's Plan Objective 1, 3, 4</i> )

### Marmot Objectives

A. Best start in life for children. B. Maximise your capabilities and have control over your life. C. Fair employment and good work for all. D. Healthy standard of living. E. Healthy and sustainable places and communities. F. Ill health prevention

### Troubled Families Unit Criteria

1. Parents or children involved in crime or anti-social behaviour
2. Children who have not been attending school regularly
3. Children who need help: children of all ages, who need help, are identified as in need or are subject to a child protection plan
4. Adults out of work or at risk of financial exclusion or young people at risk of worklessness
5. Families affected by domestic violence and abuse
6. Parents or children with a range of health problems

## Performance Framework

Performance monitoring is a key element of our approach and we continue to use outcomes based performance management information to evaluate and inform the design and delivery of our Early Help offer.

Lancashire's Continuum of Need thresholds are embedded within the Performance Framework and support is delivered appropriate to the assessed levels of need and risk for children, young people and families. The overarching outcome for all Early Help interventions is that children, young people and their families are equipped to develop protective factors which enable them to strengthen their resilience and build their capacity and capability to manage risks appropriately.

Performance is monitored and measured in a clear and effective way, through clear accountabilities within services and strong supervision arrangements. Evidence of findings will be regularly reported through the governance arrangements and will also be collated to meet the requirements of any national and local inspections.

Lancashire's Wellbeing, Prevention & Early Help service reports on its outcomes and performance to the Children and Young People's 0 – 25yrs Programme Board and through a multi-agency governance structure, as well as reporting to Lancashire Safeguarding Children's Board. This aligns with service delivery footprints at a county and local level. The governance role also responds to the national Troubled Families Unit programme for Lancashire.

The Children Centre 'Advisory Board' function, in line with statutory expectations, is aligned at a local level (districts) to ensure local accountability with the inclusion of local stakeholders including service users. The voice and influence of children, young people and parents is embedded within governance arrangements and strong links are maintained with appropriate networks and forums. This includes Lancashire Youth Council, Parent Forums etc.

### **Consultations**

N/A

### **Implications:**

This item has the following implications, as indicated:

### **Risk management**

Financial

The Department for Education (DfE) may not approve the re-designation of children centres which would lead to a review of delivery sites or claw back for any centres not retained. Under the DfE contractual 'clawback' system, local authorities that dispose of or change the use of buildings or assets funded wholly or partly through Sure Start capital grants may have to pay back some or all of the money where the continuing early years services are deemed insufficient.

Delivery of the requirements of the Troubled Families programme is set to achieve £1.5m payment by results income in 2017/18. Failure to deliver appropriate outcomes for families who require early help will impact on the number of payment by results claims that can be made.

The timescale for adaptations to WPEHS delivery sites to make settings fit for purpose impacts on service delivery and the achievement of outcomes. The service is currently carrying a large number of vacancies affecting service delivery of the WPEHS group based programmes.

There are a range of statutory duties outlined in this paper which are delivered by the WPEHS which would be at risk in the absence of this service.

**Local Government (Access to Information) Act 1985**  
**List of Background Papers**

Paper	Date	Contact/Tel
NA	NA	NA
Reason for inclusion in Part II, if appropriate		
N/A		

### **Wellbeing, Prevention and Early Help Delivery Sites**

<b>District</b>	<b>Building</b>	<b>Address</b>	<b>Services</b>
Burnley	Burnley Wood neighbourhood centre	33 Brunswick Street, Burnley, BB11 3NY	The decision is to deliver the following services from this building: 1) Wellbeing, Prevention and Early Help Service (0-11 years) (designated children's centre).
Burnley	Ightenhill neighbourhood centre	Ightenhill Children's Centre, Oak Street, Burnley, BB12 6RG	The decision is to deliver the following services from this building: 1) Wellbeing, Prevention and Early Help Service (0-11 years) (designated children's centre).
Burnley	Padiham neighbourhood centre	Burnley Road, Padiham, Burnley, BB12 8BS	The decision is to deliver the following services from this building: 1) Library Service, 2) Wellbeing, Prevention and Early Help Service (12-19+ years).
Burnley	Reedley Hallows neighbourhood centre	Barden Lane, Burnley, BB10 1JD	The decision is to deliver the following services from this building: 1) Wellbeing, Prevention and Early Help Service (0-11 years) (designated children's centre).
Burnley	Burnley South West neighbourhood centre	21 Tay Street, Burnley, BB11 4BU	The decision is to deliver the following services from this building: 1) Wellbeing, Prevention and Early Help Service (0-11 years) (designated children's centre).
Burnley	Stoneyholme and Daneshouse neighbourhood centre	57 Daneshouse Road, Burnley, BB10 1AF	The decision is to deliver the following services from this building: 1) Wellbeing, Prevention and Early Help Service (0-19+ years).
Burnley	The Chai Centre	Hurtley Street, Burnley, BB10 1BY	The decision is to deliver the following services from this building: 1) Wellbeing, Prevention and Early Help Service (0-11 years) (designated children's centre).
Burnley	The Zone in Burnley	Mount Pleasant Street, Burnley, BB11 1LW	The decision is to deliver the following services from this building: 1) Children's Social Care, 2) Leaving Care Outreach, 3) Wellbeing, Prevention and Early Help Service (12-19+ years), 4) Youth Offending Team.
Burnley	Whitegate neighbourhood centre	Whitegate Nursery School, Victoria Road, Padiham, Burnley, BB12 8TG	The decision is to deliver the following services from this building: 1) Wellbeing, Prevention and Early Help Service (0-11 years) (designated children's centre).
Chorley	Chorley	Union Street,	The decision is to deliver the following

## Appendix A

	neighbourhood centre	Chorley, PR7 1EB	services from this building: 1) Children Missing Education and Pupil Attendance Team, 2) Library Service, 3) Welfare Rights, 4) Wellbeing, Prevention and Early Help Service (12-19+ years), 5) Youth Offending Team
Chorley	Clayton Green neighbourhood centre	Clayton Green Road, Clayton Green, Chorley, PR6 7EN	The decision is to deliver the following services from this building: 1) Library Service, 2) Wellbeing, Prevention and Early Help Service (0-19+ years) (designated children's centre).
Chorley	Coppull neighbourhood centre	Spendmore Lane, Coppull, Chorley, PR7 5DF	The decision is to deliver the following services from this building: 1) Library Satellite, 2) Wellbeing, Prevention and Early Help Service (0-19+ years).
Chorley	Duke Street neighbourhood centre	Duke Street Primary School, Duke Street, Chorley, PR7 3DU	The decision is to deliver the following services from this building: 1) Wellbeing, Prevention and Early Help Service (0-11 years) (designated children's centre).
Chorley	Eccleston neighbourhood centre	The Green, Eccleston, Chorley, PR7 5TE	The decision is to deliver the following services from this building: 1) Library Satellite, 2) Wellbeing, Prevention and Early Help Service (0-19+ years).
Chorley	Highfield neighbourhood centre	Highfield Nursery School, Wright Street, Chorley, PR6 0SL	The decision is to deliver the following services from this building: 1) Wellbeing, Prevention and Early Help Service (0-11 years) (designated children's centre).
Fylde	Sydney Street neighbourhood centre	Sydney Street, St Annes, Lytham St Annes, FY8 1TR	The decision is to deliver the following services from this building: 1) Children's Social Care, 2) Welfare Rights, 3) Wellbeing, Prevention and Early Help Service (0-19+ years) (designated children's centre).
Fylde	The Zone in Fylde	Chapel Walks, off Royal Avenue, Kirkham, Preston, PR4 2TA	The decision is to deliver the following services from this building: 1) Wellbeing, Prevention and Early Help Service (0-19+ years) (designated children's centre).
Fylde	Weeton neighbourhood centre	Henderson Road, Weeton, Preston, PR4 3JU	The decision is to deliver the following services from this building: 1) Wellbeing, Prevention and Early Help Service (0-11 years) (designated children's centre).
Hyndburn	Clayton - le - Moors neighbourhood centre	Arthur Street, Clayton-le-Moors, Accrington, BB5 5NR	The decision is to deliver the following services from this building: 1) Wellbeing, Prevention and Early Help Service (0-19+ years) (designated children's centre).

## Appendix A

Hyndburn	Rishton neighbourhood centre	Station Road, Rishton, BB1 4HF	The decision is to deliver the following services from this building: 1) Library Satellite, 2) Wellbeing, Prevention and Early Help Service (0-11 years) (designated children's centre).
Hyndburn	Fairfield neighbourhood centre	Fairfield Nursery School, Fairfield Street, Accrington, BB5 0LD	The decision is to deliver the following services from this building: 1) Wellbeing, Prevention and Early Help Service (0-11 years) (designated children's centre).
Hyndburn	Great Harwood neighbourhood centre	Great Harwood Primary School, Rushton Street, Great Harwood, BB6 7JQ	The decision is to deliver the following services from this building: 1) Wellbeing, Prevention and Early Help Service (0-11 years) (designated children's centre).
Hyndburn	Great Harwood central neighbourhood centre	Queen Street, Great Harwood, BB6 7AL	The decision is to deliver the following services from this building: 1) Library Service, 2) Wellbeing, Prevention and Early Help Service (12-19+ years).
Hyndburn	Church neighbourhood centre	Norfolk Grove, Church, Accrington, BB5 4RY	The decision is to deliver the following services from this building: 1) Wellbeing, Prevention and Early Help Service (0-11 years) (designated children's centre).
Hyndburn	The Zone in Hyndburn	Paradise Street, Accrington, BB5 1PB	The decision is to deliver the following services from this building: 1) Wellbeing, Prevention and Early Help Service (12-19+ years).
Lancaster	Marsh neighbourhood centre	Appletree Nursery School, Milking Stile Lane, Lancaster, LA1 5QB	The decision is to deliver the following services from this building: 1) Wellbeing, Prevention and Early Help Service (0-11 years) (designated children's centre).
Lancaster	Ryelands neighbourhood centre	Ryelands Park, Lancaster, LA1 2LN	The decision is to deliver the following services from this building: 1) Wellbeing, Prevention and Early Help Service (0-19+ years) (designated children's centre).
Lancaster	Morecambe central neighbourhood centre	Central Drive, Morecambe, LA4 5DL	The decision is to deliver the following services from this building: 1) Library Service, 2) Registration Service, 3) Welfare Rights, 4) Wellbeing, Prevention and Early Help Service (12-19+ years).
Lancaster	Carnforth neighbourhood centre	Carnforth High School, Kellet Road, Carnforth, LA5 9LS	The decision is to deliver the following services from this building: 1) Wellbeing, Prevention and Early Help Service (0-19+ years) (designated children's centre)
Lancaster	Westgate neighbourhood	Westgate Primary School,	The decision is to deliver the following services from this building: 1) Wellbeing,

## Appendix A

	centre	Langridge Way, Westgate, Morecambe, LA4 4XF	Prevention and Early Help Service (0-11 years) (designated children's centre).
Lancaster	Lancaster central neighbourhood centre	Mill 14, White Cross Industrial Estate, Quarry Road, Lancaster, LA1 3SE	The decision is to deliver the following services from this building: 1) Registration Service, 2) Welfare Rights, 3) Wellbeing, Prevention and Early Help Service (12-19+ years) and support for families, 4) Youth Offending Team
Lancaster	Morecambe Poulton neighbourhood centre	Clarke Street, Morecambe, LA4 5HR	The decision is to deliver the following services from this building: 1) Wellbeing, Prevention and Early Help Service (0-11 years) (designated children's centre).
Pendle	Barnoldswick central neighbourhood centre	Fernlea Avenue, Barnoldswick, BB18 5DW	The decision is to deliver the following services from this building: 1) Library Service, 2) Wellbeing, Prevention and Early Help Service (12-19+ years).
Pendle	Whitefield neighbourhood centre	Maurice Street, Nelson, BB9 7HS	The decision is to deliver the following services from this building: 1) Welfare Rights, 2) Wellbeing, Prevention and Early Help Service (0-11 years) (designated children's centre).
Pendle	Colne Centre	Walton Street, Colne, BB8 0EL	The decision is to deliver the following services from this building: 1) Wellbeing, Prevention and Early Help Service (0-19+ years) (designated children's centre).
Pendle	Earby neighbourhood centre	New Road, Earby, Barnoldswick, BB18 6XA	The decision is to deliver the following services from this building: 1) Wellbeing, Prevention and Early Help Service (0-19+ years).
Pendle	Brierfield neighbourhood centre	Tunstall Square, Brierfield, BB9 5GZ	The decision is to deliver the following services from this building: 1) Library Satellite, 2) Wellbeing, Prevention and Early Help Service (0-19+ years) (designated children's centre).
Pendle	Barnoldswick Neighbourhood Centre	Gisburn Road Primary School, Gisburn Road, Barnoldswick, BB18 5LS	The decision is to deliver the following services from this building: 1) Wellbeing, Prevention and Early Help Service (0-11 years) (designated children's centre).
Pendle	The Zone in Pendle	Leeds Road, Nelson, BB9 8EL	The decision is to deliver the following services from this building: 1) Wellbeing, Prevention and Early Help Service (12-19+ years).
Pendle	Marsden Park neighbourhood centre	Walton Lane Nursery School, Walton Lane, Nelson,	The decision is to deliver the following services from this building: 1) Wellbeing, Prevention and Early Help Service (0-11 years) (designated children's centre).



## Appendix A

		BB9 8BP	
Preston	Ashton neighbourhood centre	Tulketh Crescent, Ashton-on-Ribble, Preston, PR2 2RH	The decision is to deliver the following services from this building: 1) Wellbeing, Prevention and Early Help Service (12-19+ years).
Preston	Moor Nook neighbourhood centre	Burholme Road, Ribbleton, Preston, PR2 6HN	The decision is to deliver the following services from this building: 1) Wellbeing, Prevention and Early Help Service (12-19+ years).
Preston	Preston West neighbourhood centre	Ashton Primary School, Ainsdale Drive, Ashton-on-Ribble, Preston, PR2 1TU	The decision is to deliver the following services from this building: 1) Wellbeing, Prevention and Early Help Service (0-11 years) (designated children's centre).
Preston	Ribbleton neighbourhood centre	Ribbleton Hall Drive, Ribbleton, Preston, PR2 6EE	The decision is to deliver the following services from this building: 1) Wellbeing, Prevention and Early Help Service (0-11 years) (designated children's centre).
Preston	Preston Central neighbourhood centre	Brieryfield Road, Preston, PR1 8SR	The decision is to deliver the following services from this building: 1) Registration Service, 2) Supporting Carers of Children and Young People (SCAYT+), 3) Wellbeing, Prevention and Early Help Service (0-11 years) (designated children's centre).
Preston	Sharoe Green neighbourhood centre	8 Sharoe Green Lane, Fulwood, Preston, PR2 8ED	The decision is to deliver the following services from this building: 1) Library Service, 2) Wellbeing, Prevention and Early Help Service (0-11 years) (designated children's centre).
Preston	Stoneygate neighbourhood centre	Stoneygate Nursery School, Lennox Street, Preston, PR1 3XU	The decision is to deliver the following services from this building: 1) Children's Social Care, 2) Wellbeing, Prevention and Early Help Service (0-11 years) (designated children's centre).
Preston	New Hall Lane neighbourhood centre	184 New Hall Lane, Preston, PR1 4DX	The decision is to deliver the following services from this building: 1) Wellbeing, Prevention and Early Help Service (0-11 years).
Preston	Brookfield neighbourhood centre	Brookfield Primary School, Watling Street Road, Ribbleton, Preston, PR2 6TU	The decision is to deliver the following services from this building: 1) Wellbeing, Prevention and Early Help Service (0-11 years) (designated children's centre) and children's services.
Ribble Valley	Longridge neighbourhood centre	Berry Lane, Longridge, Preston, PR3 3JA	The decision is to deliver the following services from this building: 1) Library Service, 2) Wellbeing, Prevention and Early Help Service (12-19+ years).

## Appendix A

Ribble Valley	Ribblesdale neighbourhood centre	Ribblesdale Nursery School, Queens Road, Clitheroe, BB7 1EL	The decision is to deliver the following services from this building: 1) Wellbeing, Prevention and Early Help Service (0-11 years) (designated children's centre).
Ribble Valley	The Zone in Ribble Valley	Wesleyan Row, Parson Lane, Clitheroe, BB7 2JY	The decision is to deliver the following services from this building: 1) Wellbeing, Prevention and Early Help Service (12-19+ years).
Ribble Valley	Longridge Civic neighbourhood centre	Longridge Civic Centre, Calder Avenue, Longridge, Preston, PR3 3HJ	The decision is to deliver the following services from this building: 1) Wellbeing, Prevention and Early Help Service (0-11 years) (designated children's centre).
Rossendale	Haslingden Link neighbourhood centre	Bury Road, Haslingden, BB4 5PG	The decision is to deliver the following services from this building: 1) Wellbeing, Prevention and Early Help Service (0-19+ years) (designated children's centre).
Rossendale	Bacup neighbourhood centre	Rochdale Road, Bacup, OL13 9NZ	The decision is to deliver the following services from this building: 1) Welfare Rights, 2) Wellbeing, Prevention and Early Help Service (0-19+ years) (designated children's centre).
Rossendale	The Zone in Rossendale	The Old Fire Station, Burnley Road, Rawtenstall, BB4 8EW	The decision is to deliver the following services from this building: 1) Wellbeing, Prevention and Early Help Service (0-19+ years) (designated children's centre).
Rossendale	Whitworth neighbourhood centre	Whitworth St Bartholomew's Primary School, Hall Fold, Whitworth, OL12 8TL	The decision is to deliver the following services from this building: 1) Wellbeing, Prevention and Early Help Service (0-19+ years) (designated children's centre).
South Ribble	Leyland neighbourhood centre	Lancastergate, Leyland, Preston, PR25 2EX	The decision is to deliver the following services from this building: 1) Library Service, 2) Wellbeing, Prevention and Early Help Service (0-19+ years).
South Ribble	Longton neighbourhood centre	Liverpool Old Road, Longton, Preston, PR4 5HA	The decision is to deliver the following services from this building: 1) Library Service, 2) Wellbeing, Prevention and Early Help Service (0-11 years).
South Ribble	The Zone in South Ribble	West Paddock, Leyland, Preston, PR25 1HR	The decision is to deliver the following services from this building: 1) Wellbeing, Prevention and Early Help Service (0-19+ years) (designated children's centre).
South Ribble	Wade Hall neighbourhood centre	75 Royal Avenue, Leyland, Preston, PR25 1BX	The decision is to deliver the following services from this building: 1) Wellbeing, Prevention and Early Help Service (0-11 years) (designated children's centre).

## Appendix A

South Ribble	Bamber Bridge neighbourhood centre	Brindle Road, Bamber Bridge, Preston, PR5 6YJ	The decision is to deliver the following services from this building: 1) Wellbeing, Prevention and Early Help Service (0-19+ years) (designated children's centre).
West Lancashire	Eavesdale neighbourhood centre	Eavesdale, Skelmersdale, WN8 6AU	The decision is to deliver the following services from this building: 1) Wellbeing, Prevention and Early Help Service (0-11 years) (designated children's centre).
West Lancashire	Ormskirk neighbourhood centre	Burscough Street, Ormskirk, L39 2EN	The decision is to deliver the following services from this building: 1) Library Service, 2) Wellbeing, Prevention and Early Help Service (0-19+ years) (designated children's centre).
West Lancashire	Park, Skelmersdale neighbourhood centre	Barnes Road, Skelmersdale, WN8 8HN	The decision is to deliver the following services from this building: 1) Wellbeing, Prevention and Early Help Service (0-11 years) (designated children's centre).
West Lancashire	Burscough neighbourhood centre	Station Approach, Burscough, Ormskirk, L40 0RZ	The decision is to deliver the following services from this building: 1) Library Satellite, 2) Welfare Rights, 3) Wellbeing, Prevention and Early Help Service (0-19+ years) (designated children's centre).
West Lancashire	The Zone in West Lancashire	Southway, Skelmersdale, WN8 6NL	The decision is to deliver the following services from this building: 1) Wellbeing, Prevention and Early Help Service (12-19+ years), 2) Youth Offending Team.
West Lancashire	Flamstead neighbourhood centre	St John's Catholic Primary School, Flamstead, Birch Green, Skelmersdale, WN8 6PF	The decision is to deliver the following services from this building: 1) Wellbeing, Prevention and Early Help Service (0-11 years) (designated children's centre)
Wyre	Rothwell Drive neighbourhood centre	Rothwell Drive, Fleetwood, FY7 8FF	The decision is to deliver the following services from this building: 1) Children's Social Care, 2) Wellbeing, Prevention and Early Help Service (0-11 years) (designated children's centre).
Wyre	Flakefleet neighbourhood centre	Fleetwood Flakefleet Primary School, Northfleet Avenue, Fleetwood, FY7 7ND	The decision is to deliver the following services from this building: 1) Wellbeing, Prevention and Early Help Service (0-11 years) (designated children's centre).
Wyre	Garstang neighbourhood centre	Windsor Road, Garstang, Preston, PR3 1ED	The decision is to deliver the following services from this building: 1) Library Service, 2) Wellbeing, Prevention and Early Help Service (0-19+ years) (designated children's centre).
Wyre	The Zone in Wyre	Milton Street, Fleetwood,	The decision is to deliver the following services from this building: 1) Wellbeing,

## Appendix A

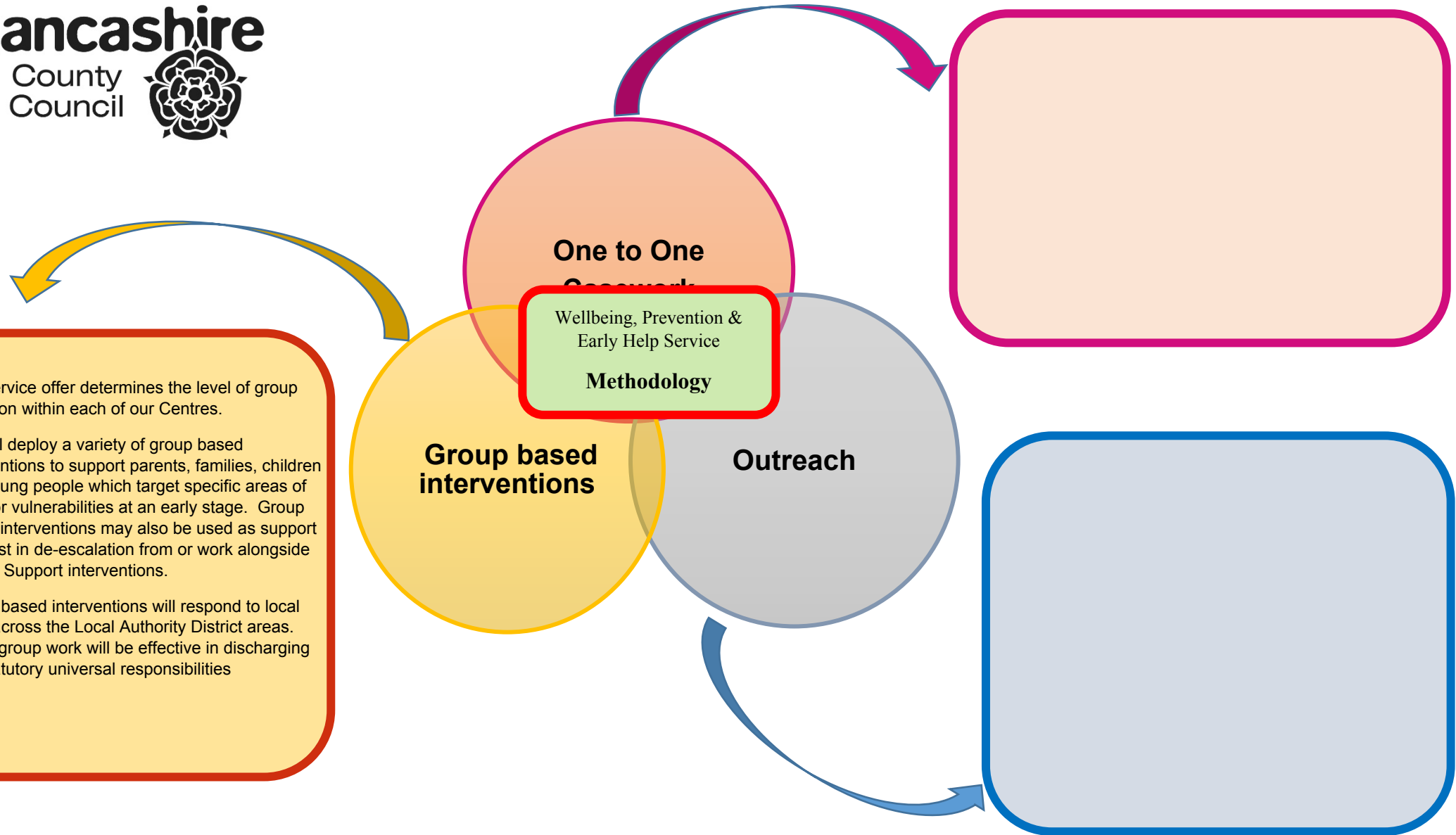
		FY7 6QW	Prevention and Early Help Service (0-19+ years) (designated children's centre), 2) Youth Offending Team.
Wyre	Thornton neighbourhood centre	Thornton Primary School, Heys Street, Burn Naze, Thornton-Cleveleys, FY5 4JP	The decision is to deliver the following services from this building: 1) Wellbeing, Prevention and Early Help Service (0-19+ years) (designated children's centre).

## Appendix B

### WPEHS staff allocation across Districts.

	Lancaster	Wyre	Fylde	Preston	South Ribble	West Lancs	Chorley	Hyndburn	Ribble Valley	Rossendale	Burnley	Pendle	Total
Senior Manager	1			1				1					3
Locality Manager	1			1	1			1			1		5
Team Leader	1	1	1	1	1	1	1	1	1	1	1	1	12
Senior Practitioner	5	3	3	6	3	5	4	4	4	3	5	4	49
Key Worker	26	18	15	33	19	25	21	23	15	19	27	23	264
Neighbourhood Outreach Support Worker Type A	11	9	6	14	7	10	9	10	6	8	13	10	113
Neighbourhood Outreach Support Worker Type B	16	11	9	18	10	13	11	12	7	10	18	12	147
Delivery Support Worker	4	4	3	7	4	4	4	4	3	4	4	4	49
Total	63	46	37	79	44	58	50	54	36	45	68	54	642









## APPENDIX D



**Statutory universal (Level 1).** Help people to help themselves to maintain & improve their quality of life and prevent significant problems occurring, through the provision of a range of 'Universal' information & support

**Targeted Early Help (Level 2).** If problems do emerge, identify them early and provide effective 'early help' services which address and provide support on the issues concerned (Level 2). Where problems have escalated and become more complex, provide more intensive, 'targeted' support to help individuals/families make significant change/ improvement in their lives, preventing their situation from worsening further to the point that they require specialist support or statutory intervention.

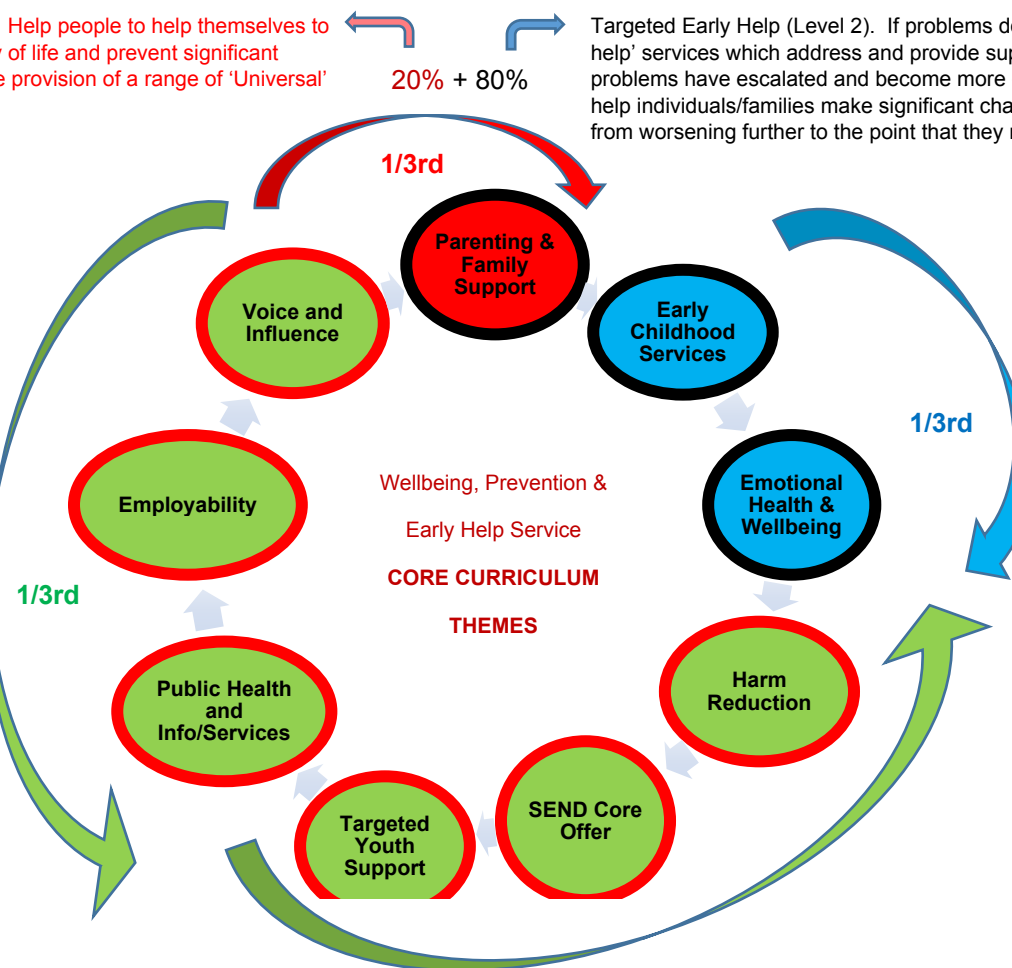
- Youth council
- Service user involvement
- Advisory boards
- Signposting POWAR
- Signposting LINKS

- **NEET Tracking/Follow up**
- **Intended destinations for young people**
- NEET Group/Drop In Support
- Lancashire Adult Learning training delivery
- Support for CLA learning offer
- Adults out of Work/ Employability
- Self-learning /Volunteering signposting

- Targeted Public health programmes
- Vitamin D
- Social media and online services
- Talkzone 2-10pm/ 365 days

- **Go4 it – Promoting Positive Activities**
- Teenage parents groups
- Lesbian, Gay, Bisexual, Transgender groups
- Detached work (Antisocial behavior hotspots)
- Targeted evening based youth work
- Targeted residential/educational visits
- Homelessness

- **Education, Health and Care plans (Band A-E)**
- SEND group based offer for children/young people with disabilities
- Targeted SEND parenting programmes



- Strengthening families programmes
- Domestic Violence Support (and Freedom recovery programme toolkit)
- Surviving Teens programme
- Requests for Support and allocations process
- Targeted Group based activity and issue based group work Targeted Caseloads
- Common Assessment Framework/ Team around the family/Lead Professional/ Outcome Stars
- Dealing with problem debt

- Breastfeeding support initiatives
- Antenatal support (Bump, birth and beyond)
- 2 year old check integrated reviews
- Early notification process and Live Birth Follow ups
- Free Early Education Entitlements
- School Nursing Service, Health Visitor Service and Midwifery drop in and Baby clinics
- Incredible years and incredible baby (3-7, 0-2)
- NICU ward/postnatal ward support
- Play sessions focusing on speech and language, child development and behaviors
- Targeted Baby massage

- Emotional Health & Wellbeing Support activity programmes
- Behaviour and anger management programmes
- Parental conflict
- Poor parental mental health

- Health promotion and access to services e.g. Substance Misuse Services, Sexual Health Services, and Tobacco Control/ Smoking Cessation, Alcohol dependency
- Child Sexual Exploitation outreach work and risk assessments
- Self-harm prevention and response programmes

Pre-natal - 8wks

8wks - 2yrs

2-3years

12-19yrs

19-25yrs (SEND)



### **Wellbeing, Prevention and Early Help Service (WPEHS) offer to GP Practices**

The Wellbeing Prevention and Early Help service (WPEHS) offers support to children, young people aged 0-19+yrs (0 - 25yrs for SEND) and their families. The service identifies as early as possible when a child, young person or family needs support, helping them to access services to meet their needs, working with them to ensure the support offered is right for them, offered in the right place, at the right time.

The main focus of the service is to provide an enhanced level of support to individual children, young people or families with higher levels of need. Service resources are prioritised towards identified priority target groups or individuals at risk who are assessed using Lancashire's Common Assessment Framework (CAF) as having more complex or intensive needs aligned to Lancashire's Revised Continuum of Need (CoN) at Level 2 and who would benefit from a targeted early help offer.

As an integrated part of its service offer for children, young people and families, WPEHS will deliver the following for children and young people within Rossendale:

#### **1. WPEHS offer regarding group based programmes**

WPEHS delivers a variety of group based interventions to support parents, families, children and young people which target specific areas of need or vulnerabilities.

In addition the WPEHS operates a flexible programme of group based activities, largely targeted towards the priority groups but also in response to local need. WPEHS prioritise resources towards identified key priority target groups or individuals at risk.

Group based sessions are delivered from a network of 75 neighbourhood centres; some of which deliver a 0-11 offer, some a 12-19 (25 for SEND) offer and some centres operating across the 0-19 (25) age range. Within each district one centre delivers an enhanced group based delivery specification of twelve delivery sessions a week with the remainder delivering a core group based delivery specification of around seven delivery sessions per week. In each district, the neighbourhood centre delivering the enhanced programme will respond to the discrete needs of 12-19+yrs, prioritising vulnerable groups of young people.

Group based activities are delivered when most needed throughout the daytime Monday- Friday (inclusive), with some additional evening and weekend delivery.

Pending establishment of the full service offer the following groups are currently being delivered;

- Positive parenting
- Surviving teens
- Support for young people who are not in education, employment and training (NEET)
- Bumps birth and beyond BBB
- Speech and Language

## APPENDIX E

- Boys /Girls Teenage group looking at Issues effecting them
- Youth Council
- SEND groups
- The details of this group work programme is well publicised at district level.

Details are also available on the YouthZone 'What to Do' webpages and the Family Information Network Directory.

Further information regarding these groups are available from the WPEHS advice and support line, Talkzone, on 0800 51 11 11 or [talkzone@lancashire.gov.uk](mailto:talkzone@lancashire.gov.uk)

In order to deliver these sessions safely WPEHS staff are committed to undertaking suitable risk assessments designed to manage needs and ensure the appropriate involvement and access requirements of all group participants. It is expected that children aged 11 and under will be accompanied by a parent or carer.

### **2. WPEHS Targeted Support Offer (casework)**

WPEHS provide an enhanced level of support to individual children, young people or families with higher levels of need which includes looked after children as one of the services defined priority groups. The targeted support offer is delivered to those assessed using Lancashire's Common Assessment Framework (CAF) as having more complex or intensive needs aligned to Lancashire's Revised Continuum of Need (CoN) at Level 2.

The WPEHS also provides specified and agreed support where children's social care has identified needs within an individual's action plan where the WPEHS is best placed to respond. The service operates a weekly allocations meeting where children's social care colleagues bring cases that have been identified for joint work or step down to jointly agree appropriate actions.

Key workers deliver intensive support underpinned by quality CAF assessment and a co-ordinated and effective multi-agency lead professional approach. WPEHS key workers work as part of a 'team around the family' and undertake the Lead Professional role where appropriate within their caseloads.

Interventions typically last up to 12 weeks and involve 1:1 support; regularly meeting with the individual and their family/carers to work towards meeting their assessed needs through the development of an appropriate plan and completion of agreed actions. Outcomes are tracked through the use of the 'Family Star' outcomes model.

The WPEHS is able to support children, young people, their families and carers with a range of challenges which can pose a risk to children and young people including poor health and wellbeing, substance misuse, neglect, risk taking behaviours, CSE and parenting skills.

The service uses a range of delivery methods including outreach and detached methods which ensures a wide reach of our services across communities and where appropriate, this can be delivered within families' homes, or from other appropriate community settings.

Access to this support is via a Requests for Support form which is available at [Lancashire Children's Trust - - Request for Support Form](#) and should be submitted to [preventionearlyhelp@lancashire.gov.uk](mailto:preventionearlyhelp@lancashire.gov.uk)

### **3. WPEHS offer regarding Virtual Support**

The WPEHS provides virtual support to all young people aged 12-19 (25 for SEND), accessed for example via telephone, internet or mobile phone as part of the 'Talkzone' suite of services.

Talkzone provides a confidential helpline where young people can obtain a range of advice and support on issues such as problems at home, relationships, sex and health, jobs and training, mental health, drugs and alcohol, bullying and things to do.

The service is available 365 days per year, 2pm to 10pm. Contact with Talkzone can lead to a referral to the WPEH service targeted support offer, signposting to the WPEHS group based provision and has appropriate pathways established for any safeguarding issues that arise.

### **4. Offer to GP Practices**

- Senior Practitioner (SP) link to each GP Practice as the first point of contact to the WPEHS
- SP specifically linked to the care navigator/practice manager
- SP to raise awareness and provide information and advice around signposting families to appropriate early help services in District.
- SP to provide information and advice to link GP practice about services available from the WPEHS
- SP to support GP practice in completing and/or co-producing request for service (RfS) and CAFs where appropriate



**Wellbeing, Prevention and Early Help Service (WPEHS) offer to Lancashire schools.**

The Wellbeing Prevention and Early Help service (WPEHS) offers support to children, young people aged 0-19+yrs (0 - 25yrs for SEND) and their families. The service identifies as early as possible when a child, young person or family needs support, helping them to access services to meet their needs, working with them to ensure the support offered is right for them, offered in the right place, at the right time.

The main focus of the service is to provide an enhanced level of support to individual children, young people or families with higher levels of need. Service resources are prioritised towards identified priority target groups or individuals at risk who are assessed using Lancashire's Common Assessment Framework (CAF) as having more complex or intensive needs aligned to Lancashire's Revised Continuum of Need (CoN) at Level 2 and who would benefit from a targeted early help offer.

As an integrated part of its service offer for children, young people and families, WPEHS will deliver the following for children and young people within Rossendale:

**1. WPEHS offer regarding group based programmes**

WPEHS delivers a variety of group based interventions to support parents, families, children and young people which target specific areas of need or vulnerabilities.

In addition the WPEHS operates a flexible programme of group based activities, largely targeted towards the priority groups but also in response to local need. WPEHS prioritise resources towards identified key priority target groups or individuals at risk.

Group based sessions are delivered from a network of 75 neighbourhood centres; some of which deliver a 0-11 offer, some a 12-19 (25 for SEND) offer and some centres operating across the 0-19 (25) age range. Within each district one centre delivers an enhanced group based delivery specification of twelve delivery sessions a week with the remainder delivering a core group based delivery specification of around seven delivery sessions per week. In each district, the neighbourhood centre delivering the enhanced programme will respond to the discrete needs of 12-19+yrs, prioritising vulnerable groups of young people.

Group based activities are delivered when most needed throughout the daytime Monday- Friday (inclusive), with some additional evening and weekend delivery.

Pending establishment of the full service offer the following groups are currently being delivered;

- Positive parenting
- Surviving teens
- Support for young people who are not in education, employment and training (NEET)
- Bumps birth and beyond BBB

## APPENDIX F

- Speech and Language
- Boys /Girls Teenage group looking at Issues effecting them
- Youth Council
- SEND groups
- The details of this group work programme is well publicised at district level.

Details are also available on the YouthZone 'What to Do' webpages and the Family Information Network Directory.

Further information regarding these groups are available from the WPEHS advice and support line, Talkzone, on 0800 51 11 11 or [talkzone@lancashire.gov.uk](mailto:talkzone@lancashire.gov.uk)

In order to deliver these sessions safely WPEHS staff are committed to undertaking suitable risk assessments designed to manage needs and ensure the appropriate involvement and access requirements of all group participants. It is expected that children aged 11 and under will be accompanied by a parent or carer.

### **2. WPEHS Targeted Support Offer (casework)**

WPEHS provide an enhanced level of support to individual children, young people or families with higher levels of need which includes looked after children as one of the services defined priority groups. The targeted support offer is delivered to those assessed using Lancashire's Common Assessment Framework (CAF) as having more complex or intensive needs aligned to Lancashire's Revised Continuum of Need (CoN) at Level 2.

The WPEHS also provides specified and agreed support where children's social care has identified needs within an individual's action plan where the WPEHS is best placed to respond. The service operates a weekly allocations meeting where children's social care colleagues bring cases that have been identified for joint work or step down to jointly agree appropriate actions.

Key workers deliver intensive support underpinned by quality CAF assessment and a co-ordinated and effective multi-agency lead professional approach. WPEHS key workers work as part of a 'team around the family' and undertake the Lead Professional role where appropriate within their caseloads.

Interventions typically last up to 12 weeks and involve 1:1 support; regularly meeting with the individual and their family/carers to work towards meeting their assessed needs through the development of an appropriate plan and completion of agreed actions. Outcomes are tracked through the use of the 'Family Star' outcomes model.

The service is able to support children, young people, their families and carers with a range of challenges which can pose a risk to children and young people including poor health and wellbeing, substance misuse, neglect, risk taking behaviours, CSE and parenting skills.

The WPEHS uses a range of delivery methods including outreach and detached methods which ensures a wide reach of our services across communities and where



appropriate, this can be delivered within families' homes, or from other appropriate community settings.

Access to this support is via a Requests for Support form which is available at [Lancashire Children's Trust - - Request for Support Form](#) and should be submitted to [preventionearlyhelp@lancashire.gov.uk](mailto:preventionearlyhelp@lancashire.gov.uk)

### **3. WPEHS offer regarding Virtual Support**

The WPEHS provides virtual support to all young people aged 12-19 (25 for SEND), accessed for example via telephone, internet or mobile phone as part of the 'Talkzone' suite of services.

Talkzone provides a confidential helpline where young people can obtain a range of advice and support on issues such as problems at home, relationships, sex and health, jobs and training, mental health, drugs and alcohol, bullying and things to do.

The service is available 365 days per year, 2pm to 10pm. Contact with Talkzone can lead to a referral to the WPEHS targeted support offer, signposting to the WPEHS group based provision and has appropriate pathways established for any safeguarding issues that arise.

### **4. Offer to Schools**

- Senior Practitioner (SP) /Key worker to link with each school cluster as the first point of contact to the WPEHS
- Key Worker to specifically be linked to each school within the District.
- SP/Key worker to raise awareness and provide information and advice around signposting families to appropriate early help services.
- SP/Key worker to provide information and advice to link school about services available from the WPEHS
- Key worker to support school in completing and/or co-producing request for service (RfS) and CAFs where appropriate
- Each school to identify top 5 most vulnerable families that the WPEHS can support over the summer holiday period



## APPENDIX G

### Wellbeing, Prevention and Early Help Service (WPEHS) offer for Children Looked After and Care Leavers from April 2017

The Wellbeing Prevention and Early Help service (WPEHS) offers support to children, young people age 0-19+yrs (0 - 25yrs for SEND) and their families/carers. The service Mission statement is to identify as early as possible when vulnerable children, young people or families would benefit from targeted support, long before issues become a problem, working with them to ensure that support offered is;

- Right for them
- Offered in the right place
- Delivered at the right time

The main focus of the service is to provide an enhanced level of support to targeted individual children, young people or families with higher levels of need. Service resources are prioritised towards identified priority target groups or individuals at risk who are assessed using Lancashire's Common Assessment Framework (CAF) as having more complex or intensive needs aligned to Lancashire's Revised Continuum of Need (CoN) at Level 2 and who would benefit from a targeted early help offer. Looked after children and care leavers are identified as a priority group to be targeted by the service; see appendix A.

As an integrated part of its service offer for looked after children, care leavers, their families and carers WPEHS deliver support to looked after children and care leavers under three strands;

<b>Strand 1</b> <b>Support available for all children and young people at level 2 of the CoN</b>	<b>Strand 2</b> <b>Support available to targeted individuals from WPEHS priority groups (includes looked after children and care leavers)</b>	<b>Strand 3</b> <b>Support available exclusively to looked after children and care leavers</b>
WPEHS Group based programme	WPEHS emotional health and wellbeing commissioned service	Delivery of Careers, education, information, advice and guidance
WPEHS targeted support offer	Tracking of young people aged 16-18 at risk of NEET	Delivery of 'Birth and Beyond' training for foster carers
Virtual Support	Voice and Influence	Impartial and independent service for CLA who wish to make a complaint
	Multi-agency protocols and pathways	
	Support for Post 16 transitions	

## **APPENDIX G**

A multi-agency Outcomes Framework has been developed which provides robust measurements to monitor and evaluate the support the service offers. This also enables the service to identify a strategic and management understanding of what interventions work to achieve a positive impact in a sustainable way. These outcomes are strategically aligned with Lancashire's commitment to the Marmot principles (Fair Society, Healthy Lives 2010). They also incorporate our responsibilities in responding to the requirement of the national Troubled Families Programme. The WPEH service outcomes framework can be found at appendix B.

### **Strand 1: Support available for all children and young people at level 2 of the Lancashire CoN**

#### **1.1 WPEHS group based programme offer**

WPEHS delivers a variety of group based interventions to support parents, families, children and young people which target specific areas of need or vulnerabilities including looked after children.

The service brings together and coordinates services around the prevention and early help agenda, from midwives and health visitors to childcare and support for young people and families, ensuring a range of direct access to integrated services across the Neighbourhood Centres in each District to meet the needs of local communities. These sessions are accessible to children, young people, their families and carers.

In addition the WPEHS operates a flexible programme of group based activities, largely targeted towards the priority groups identified in appendix A but also in response to local need. WPEHS prioritise resources towards identified key priority target groups or individuals at risk which includes looked after children.

Group based sessions are delivered from a network of 75 neighbourhood centres; some of which deliver a 0-11 offer, some a 12-19 (25 for SEND) offer and some centres operating across the 0-19 (25) age range. Within each district one centre delivers an enhanced group based delivery specification of twelve delivery sessions a week with the remainder delivering a core group based delivery specification of around seven delivery sessions per week. In each district, the neighbourhood centre delivering the enhanced programme will respond to the discrete needs of 12-19+yrs, prioritising vulnerable groups of young people including looked after children.

Group based activities are delivered when most needed throughout the daytime Monday- Friday (inclusive), with some additional evening and weekend delivery.

The details of this group work programme is well publicised at district level. Details are also available on the YouthZone 'What to Do' webpages and further information regarding these groups is available from the WPEHS advice and support line, Talkzone, on 0800 51 11 11 or [talkzone@lancashire.gov.uk](mailto:talkzone@lancashire.gov.uk)

In order to deliver these sessions safely WPEHS staff are committed to undertaking suitable risk assessments designed to manage activities safely. Risk assessments may also be required to meet the needs of specific individuals, the nature of the activity and/or the environment.

## **APPENDIX G**

### **1.2 WPEHS Targeted Support Offer**

WPEHS provide an enhanced level of support to individual children, young people or families with higher levels of need which includes looked after children as one of the service's defined priority groups. The targeted support offer is delivered to those assessed using Lancashire's Common Assessment Framework (CAF) as having more complex or intensive needs aligned to Lancashire's Revised Continuum of Need (CoN) at Level 2.

The WPEHS also provides specified and agreed support where children's social care has identified needs within an individual's action plan where the WPEHS is best placed to respond. The WPEHS operates a weekly allocations meeting where children's social care colleagues bring cases that have been identified for joint work or step down to jointly agree appropriate actions.

Key workers deliver intensive support underpinned by quality CAF assessment and a co-ordinated and effective multi-agency lead professional approach. WPEHS key workers work as part of a 'team around the family' and undertake the Lead Professional role where appropriate within their caseloads.

Interventions typically last up to 12 weeks and involve 1:1 support; regularly meeting with the individual and their family/carer to work towards meeting their assessed needs through the development of an appropriate plan and completion of agreed actions. Outcomes are tracked through the use of the 'Family Star' outcomes model.

The WPEHS is able to support children, young people, their families and carers with a range of challenges which can pose a risk to children and young people including poor health and wellbeing, substance misuse, neglect, risk taking behaviours, CSE and parenting skills.

The WPEHS uses a range of delivery methods including outreach and detached methods which ensures a wide reach of our services across communities and where appropriate, this can be delivered within families' homes, or from other appropriate community settings.

Access to this support is via a Requests for Support form which is available at [Lancashire Children's Trust - - Request for Support Form](#) and should be submitted to [preventionearlyhelp@lancashire.gov.uk](mailto:preventionearlyhelp@lancashire.gov.uk)

The service pathway for targeted support is available at Appendix C.

### **1.3 WPEHS offer regarding Virtual Support**

The WPEHS provides virtual support to all young people aged 12-19 (25 for SEND), accessed for example via telephone, internet or mobile phone as part of the 'Talkzone' suite of services.

Talkzone provides a confidential helpline where young people can obtain a range of advice and support on issues such as problems at home, relationships, sex and health, jobs and training, mental health, drugs and alcohol, bullying and things to do.

The service is available 365 days per year, 2pm to 10pm. Contact with Talkzone can lead to a referral to the WPEHS targeted support offer, signposting to the WPEHS group based provision and has appropriate pathways established for any safeguarding issues that arise.

## APPENDIX G

### **Strand 2: Support available to targeted individuals from WPEHS priority groups (includes looked after children and care leavers)**

#### **2.1 WPEHS emotional health and wellbeing commissioned service**

In response to the increasing demand for emotional, health and wellbeing (EH&W) services the WPEHS commissions specialist EH&W support for children and young people assessed using Lancashire's Common Assessment Framework (CAF) as having more complex or intensive needs aligned to Lancashire's Revised Continuum of Need (CoN) at Level 2, 3 and 4 so that by intervening earlier, where possible this will prevent escalation in to specialist Tier 2 & 3 mental health services.

For 2017/18 £1.15m has been set aside to fund this service, partly funded by the Schools Forum and partly by a shift of funds from the Tier 2/3 CAMHS contracts into early preventative EH&W support. This service is delivered by the Child Action North West Partnership and provides a range of preventative, evidence based interventions together with more specialist early help EH&W counselling provision. These interventions typically last up to 12 weeks. The contract operates on a payment by results model with payment made where the provider can demonstrate positive outcomes for the individual child or young person using the 'Star' distance travelled outcomes tool.

The delivery model includes five separate strands;

1. Triage, Assessment & Action Map
2. Building Resilience (Core theme across all interventions)
3. Whole Family Support (Rapid Support)
4. Therapeutic Support
5. Community & Peer Support (Sustained Development)

Services that CYP may receive under this commission may include; (this is not an exhaustive list)

Anxiety	Self- harm
Depression and low mood	Confidence and self-esteem
Bereavement, loss and separation	Emotional regulation
Sexual identity	Therapeutic Group Work
One to one person/humanistic centred counselling	Play Therapy
Systemic Family Therapy	Drama Therapy
Resilience Therapy	Child sexual exploitation
NLP	Anxiety and depression
CBT	Body image/disordered eating
Relationship counselling	Solution focused therapy
Attachment issues	

## **APPENDIX G**

Access to this service is via a Requests for Support form which is available at [Lancashire Children's Trust - - Request for Support Form](https://www.lancashire.gov.uk/childrens-trust/request-for-support-form) and should be submitted to [preventionearlyhelp@lancashire.gov.uk](mailto:preventionearlyhelp@lancashire.gov.uk)

### **2.2 Tracking of young people aged 16-18 at risk of NEET**

The WPEHS track and monitor the progress of all children and young people to ensure that those young people at risk of being NEET (not in education, employment or training) are identified and the appropriate support provided. All Lancashire's young people are tracked up to the age of 17. This involves tracking all young people to ensure that they have an intended destination at the end of their compulsory education and, subsequently, a suitable offer or learning. Contact is made with all young people, where possible, for whom a destination is not known to ensure that the right support can be offered should they be NEET or at risk of becoming NEET.

Looked after children are at a particularly high risk of becoming NEET and are tracked up to age 18 to ensure that they can be supported by a Key Worker where appropriate. Where looked after children are at risk of becoming NEET Key workers will provide 1:1 support to help them remain in a positive destination and achieve their education, learning or employment goals.

### **2.3 WPEHS CLA offer regarding voice and influence**

WPEHS is committed to ensuring that our service provision is shaped by the views and experiences of all children, young people and families.

The WPEHS actively promotes the involvement of looked after children and young people within wider engagement processes as part of a council's participation strategy. This includes promotion of the LINX group, Lancashire's Children in Care council and Lancashire's Youth Council for young people aged 12-19 (25) which operates at both District and County levels. Looked after children are a priority group for representation on local district and County Youth Councils which are led by WPEHS staff.

Locally all districts actively consult with service users to receive feedback on service provision and to help shape the services that are delivered.

### **2.4 WPEHS CLA offer regarding multi agency working and pathways**

The WPEHS is committed to ensuring clear information sharing processes and pathways with multi agency partners with respect to looked after children.

Preventing homelessness is a key priority for Lancashire County Council and nationally there is recognition that Care Leavers are most at risk. The WPEHS works in partnership to support young people at risk of homelessness with District Borough Councils, VCFS organisations that provide supported accommodation, emergency accommodation and social housing, Children's Social Care, Social Housing providers and Floating Support: Information and Advice Services as part of the Lancashire Joint Protocol for Homeless 16/17 year olds.

WPEHS homeless offer for 16/17 year olds outlines that the service will deliver targeted youth support with young people through 1:1 key worker support to address their needs, looking primarily at issues such as family and relationships, personal safety, emotional health and

## **APPENDIX G**

wellbeing, rights and responsibilities and structure. Workers will provide intensive support over a period of time and will focus on building resilience and self-help strategies.

The WPEHS also delivers one to one and group based outreach and detached work on the streets enabling relationships in particular with those young people least likely to be accessing services, having a presence in the community and building knowledge of young people's issues / experiences.

This work is underpinned by the Lancashire Continuum of Need and CAF process.

The WPEHS recognises and interfaces with other appropriate assessment tools used by key partners and will work in partnership to provide focused and coordinated early help interventions as part of agreed actions identified.

Where a looked after child is identified by any partner organisation as requiring early help or preventative support at level 2 of Lancashire's Revised Continuum of Need (CON) support can be requested by completing a 'Request for Support'.

The WPEHS operates a 'one front door' referral system and all requests for support should be submitted to [preventionearlyhelp@lancashire.gov.uk](mailto:preventionearlyhelp@lancashire.gov.uk)

Requests for Support forms are available at [Lancashire Children's Trust - - Request for Support Form](#).

### **2.5 Support for Post 16 transitions**

The WPEHS supports post 16 transition into suitable education or learning through the provision of a mailing house which enables further education establishments and learning providers to target priority groups with opportunities for post 16 education and training.

To improve outcomes for targeted vulnerable groups individual educational establishments or learning providers target potential learners with details of the provision available. Once the individual education and training providers have created the documentation to be circulated it is passed to a printing and distribution centre.

Under a Data Sharing Agreement the WPEHS, upon request, provide contact data on a specific targeted group from a specific district area which facilitates the circulation of targeted promotional literature.

This literature is aimed at securing a positive destination for vulnerable, priority groups to improve long term employment outcomes.

## **Strand 3: Support available exclusively to looked after children and care leavers**

### **3.1 WPEHS CLA offer regarding Careers Education Information, Advice and Guidance**

Research and experience has shown that Children Looked After (CLA) are often at risk of becoming NEET (not in education, employment or training). It is widely recognised that a period of NEET can be associated with negative outcomes in later life, including unemployment,



## **APPENDIX G**

reduced earnings, poor health and life satisfaction, which has an impact on both the individual and the economy and, therefore, supporting looked after young people into positive destinations is a key outcome measure for both LCC and Schools.

From September 2012 amendments to the Education Act 2008 meant that individual schools have the responsibility for securing careers education, information, advice and guidance (CEIAG) for the children and young people on their school roll. However, Lancashire, through the School's Forum have committed £150k funding per annum to provide additional targeted support to looked after children to improve the outcomes for this group.

The WPEHS has been commissioned to provide this targeted support through working in partnership with LCC Virtual School for CLA. WPEHS work in partnership with the Virtual school and the Employment Support Team to support young people into education, employment or training, providing an effective programme of Careers Education, Information, Advice and Guidance to Year 11 pupils.

This commission covers all young people who are Looked After by Lancashire County Council or other LA's, when accommodated within Lancashire and who are identified through the Virtual School as CLA, requiring additional support.

All looked after children are invited to take up this offer by letter as they begin year 11. The young person's social worker and the school are also made aware of the support available so that they can encourage the young person to take up this support. WPEH service chase up this offer in the Autumn Term.

Where a young person or a social worker wishes to take up the offer of support the case is picked up by a WPEHS key worker qualified to deliver careers education, information, advice and guidance. The keyworker will work with the young person to develop an individual action plan that is shared with the young person's social worker, the virtual school and the appropriate CLA designated teacher at school. This action plan is used to feed into the young person's Personal Education Plan (PEP) and Pathway Plan.

The offer includes support to understand the options available to looked after young people based on their predicted grades and how to access education, employment or training opportunities that meet with their career aspirations. This includes making links with local education and training providers in addition to engagement with local employers. Care Leavers are supported to develop decision making, career management and job seeking skills.

Where additional barriers to progress are identified the key worker can refer the young person for additional WPEHS targeted support. Key workers utilise the 'Star' outcomes tool for all young people who take up the offer of support, enabling young people and the service to monitor progress over the course of the intervention.

As a result of this service, 91.9% of the year 11 CLA had plans in place to take up a place of learning in September 2016.

Where a looked after child is identified as NEET during the 16-18 year old tracking the details are passed to a WPEHS key worker who will make contact with the young person to provide the additional support required to minimise the period that they are NEET and to secure an alternative offer of education, employment or training.

## **APPENDIX G**

As part of this commission the service also supports the Virtual School in delivery of training to designated CLA teachers and Children's Social Care staff.

Universal careers education, information advice and guidance is also available via virtual and digital support, which can be accessed through the 'Talkzone' service via telephone, email, SMS text and social media (principally facebook and twitter). This service provides a foundation stone for access, being available 365 days per year, 2pm to 10pm.

The pathway for the careers education, information, advice and guidance support is included at Appendix D.

### **3.2 Delivery of 'Birth and Beyond' training for foster carers**

The WPEHS offers 'Birth and Beyond' training to new foster carers in preparation for taking home a foster child aged 0 to 5. This half day training is delivered on request by children's social care and covers the following areas;

- What equipment is needed for a baby
- Changes to routine
- Finances
- Feeding a new baby
- Baby's development
- Keeping baby safe

This training is also an opportunity to deliver the wider Public Health messages such as safer sleeping, smoking and oral health.

### **3.3 Impartial and independent service for CLA who wish to make a complaint**

The WPEHS provides an impartial and independent route for looked after young people to raise concerns regarding any aspect of their care through the service's confidential Talkzone service.

This agreement between the WPEHS and The Customer Feedback service has been in place since May 2011. Talkzone details are included in complaint literature and promoted in posters, at meetings and visits. The very significant benefits this service offers young people include:

- A listening ear from staff with skills and experience in talking to young people.
- The accessibility of the service every day of the year and out of office hours.
- The range of media they can use to contact for free.
- Impartiality and lack of information on them from Children's Social Care

When a young person contacts the Talkzone service with a concern or complaint about Children's Social Care the service will offer a listening ear if the young person wants to talk or needs reassurance about a problem. The service will explain that they have a right to complain, how to do it, and offer reassurance if they do make a complaint.

The service will establish how the young person wants the Customer Feedback Service to contact them. The worker will also establish if there are issues of privacy or if they may only be free to talk confidentially at certain times of the day.

## **APPENDIX G**

The WPEHS Talkzone staff will explain in brief terms the complaints procedures, reassure the young person that if they make a complaint or comment the team, or their CSC workers, will not treat them badly for doing so. Young people are reassured that making a complaint can be useful for them and to other as they provide the opportunity to put things right that have gone wrong.

The WPEHS will establish if the young person wants or needs an advocate. Where the young person requests an advocate the service will signpost to Lancashire's Children's Rights Service.

All details are referred to the [\*\*CYP Customer Feedback Service\*\*](#) team mailbox.

### Appendix A WPEH Service Priority Groups

When considering targeting services, Wellbeing, Prevention and Early Help Service will prioritise the following groups/ individual children, young people or families;

- With Special Educational Needs and/or Disabilities or with behaviour difficulties
- Experiencing Neglect
- Workless or at risk of financial exclusion
- With a range of health problems
- Affected by domestic abuse
- Affected by emotional and mental health issues
- Young Parents/ new parents
- Parents who are unlikely to take advantage of universal early childhood services
- Young Carers
- Homeless
- Asylum seekers and refugees
- At risk of and/or having experienced child sexual exploitation
- Who are transient including asylum seekers, economic migrants and traveller communities
- Involved in crime or anti-social behaviour
- Not attending school regularly and at risk of exclusion
- Engaging in / affected by risk taking behaviours
- With protected characteristics as defined by the Equality Act 2010

*(WPEHS will support Children's Social Care cases (including Children in Need (CiN) and those stepping down from social care), where in the best interest of the child/young person, and as part of plans for children and young people looked after by the local authority and those subject to a child protection plan)*

## Appendix B WPEHS Outcome Framework

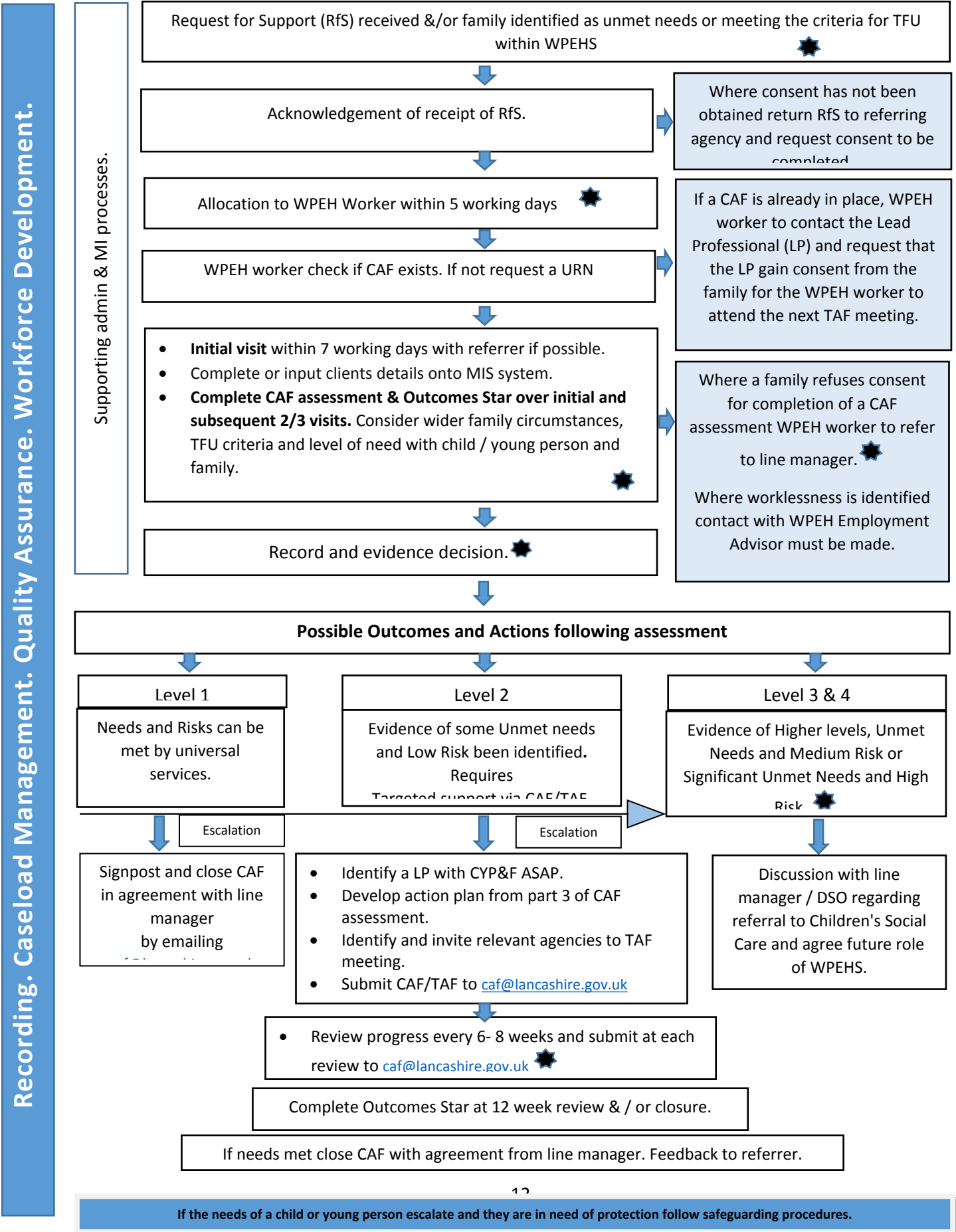
WPEHS focusses on achieving positive impact for children, young people and their families in five key areas. These 'outcomes' are strategically aligned with Lancashire's expectations in the Children and Young People's Plan and to the Marmot principles (Fair Society, Healthy Lives, and Marmot 2010) and incorporate our responsibilities in responding to the requirement of the national Troubled Families Programme.

Outcome 1	Outcome 2	Outcome 3	Outcome 4	Outcome 5
Children and young people are safe and protected from harm. <i>(Children and Young People's Plan Objective 1)</i>	Children, young people and families are resilient, aspirational and have the knowledge, capability and capacity to deal with wider factors which affect their health and wellbeing, life chances and economic wellbeing <i>(Children &amp; Young People's Plan Objective 2, 3)</i>	Children, young people and their families are helped to live healthy lifestyles, engage in positive social activities and make healthy choices <i>(Children &amp; Young People's Plan Objectives 2, 4, 5)</i>	Children, young people and families health is protected from major incidents and other threats whilst reducing health inequalities <i>(Children &amp; Young People's Plan Objective 1, 4)</i>	Targeting those in more disadvantaged communities, the number of children, young people and families living with preventable ill health and dying prematurely is reduced <i>(Children &amp; Young People's Plan Objective 1, 3, 4)</i>
Marmot Objective <b>A, B, C, D, E, F</b>	Marmot Objective <b>B, C, D</b>	Marmot Objective <b>A, B, C</b>	Marmot Objective <b>D, F</b>	Marmot Objective <b>A, C, D, E</b>
TFU Criteria 1, 3, 5	TFU Criteria 1, 2, 3, 4, 5, 6	TFU Criteria 1, 2, 4, 5, 6	TFU Criteria 1, 3, 5, 6	TFU Criteria 4, 5, 6
<b>Marmot Objectives</b> <b>A. Best start in life for children. B. Maximise your capabilities and have control over your life. C. Fair employment and good work for all. D. Healthy standard of living. E. Healthy and sustainable places and communities. F. Ill health prevention</b>				
<b>Troubled Families Unit Criteria</b> 1. Parents or children involved in crime or anti-social behaviour 2. Children who have not been attending school regularly 3. Children who need help: children of all ages, who need help, are identified as in need or are subject to a child protection plan 4. Adults out of work or at risk of financial exclusion or young people at risk of worklessness 5. Families affected by domestic violence and abuse 6. Parents or children with a range of health problems				

# Appendix C Lancashire Wellbeing, Prevention and Early Help Service

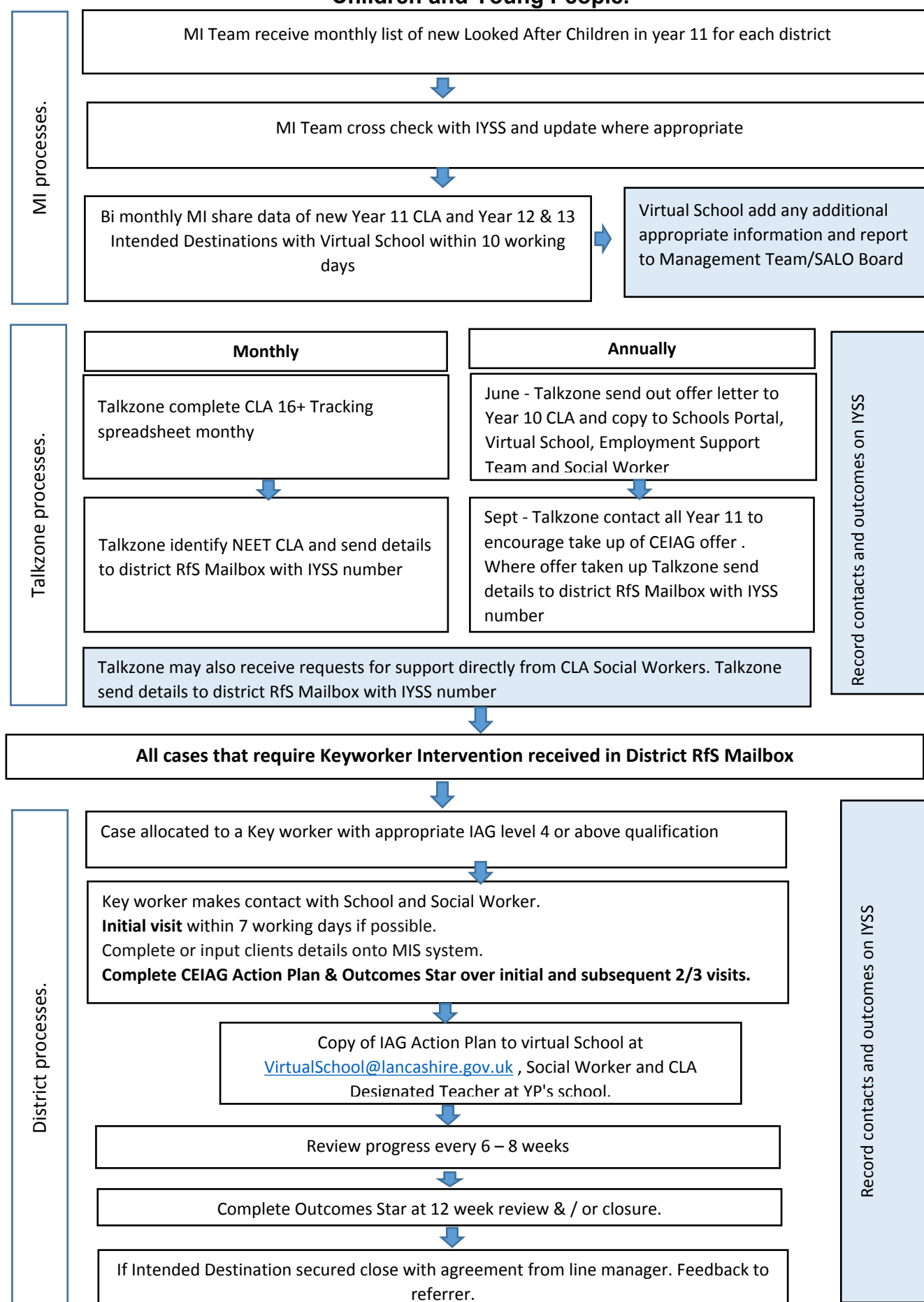
## Flowchart for delivery of targeted Wellbeing, Prevention and Early Help Services with Children / Young People and Families.

★ = Management Checkpoint.



## Appendix D Lancashire Wellbeing, Prevention and Early Help Service

### Flowchart for delivery of targeted Careers Education, Advice and Guidance to Looked After Children and Young People.







**Wellbeing, Prevention and Early Help Service (WPEHS) offer for children and young people with SEND and their families and carers from April 2017**

The Wellbeing Prevention and Early Help service (WPEHS) offers support to children, young people age 0-19+yrs (0 - 25yrs for SEND) and their families. The service identifies as early as possible when a child, young person or family needs support, helping them to access services to meet their needs, working with them to ensure the support offered is right for them, offered in the right place, at the right time.

The main focus of the service is to provide an enhanced level of support to individual children, young people or families with higher levels of need. Service resources are prioritised towards identified priority target groups or individuals at risk who are assessed using Lancashire's Common Assessment Framework (CAF) as having more complex or intensive needs aligned to Lancashire's Revised Continuum of Need (CoN) at Level 2 and who would benefit from a targeted early help offer.

As an integrated part of its service offer for children, young people and families, WPEHS will deliver the following for children and young people with SEND and their families;

**1. WPEHS SEND offer regarding group based programmes**

WPEHS delivers a variety of group based interventions to support parents, families, children and young people which target specific areas of need or vulnerabilities.

The WPEHS brings together and works in partnership with other key agencies coordinates services around the prevention and early help agenda, from midwives and health visitors to childcare providers and support for young people and families, ensuring a range of direct in order to facilitate access to integrated, targeted and some universal services across the Neighbourhood Centres in each District to meet the needs of local communities. These sessions are accessible to all children, young people, their families and carers, including those with SEND needs.

In addition, the WPEHS, as part of their targeted early help offer, will **provide at minimum, two group based opportunities per week dedicated to children and young people with SEND** in each district area, one focused around children (up to 0-11yrs), and a second focused on young people (over 11yrs).1-25yrs.

Children and young people attending these targeted groups may need to be accompanied by a parent/carer to attend to any personal or care needs as required.

Current details of these groups across the County area are as follows; .

# APPENDIX H

<b>District</b>	<b>Group</b>	<b>Where</b>	<b>When</b>	<b>Contact</b>
Burnley	Our Choice SEND Group 15-25 years	Burnley Zone	Tuesday 18.30 – 20.30	Kathryn Bancroft 07398253144
Chorley	0-5 years SEND Group	Highfield Neighbourhood Centre	Run Fortnightly Saturday 10.00 – 12.00	01257 262441
	6-11 years SEND Group			
	12-25 years SEND Group	Chorley Zone	Saturday 10.00 – 12.00	01257 270483
Fylde	Teen Seen 12-25 years SEND Group	Fylde Zone	Tuesday 18.30 – 20.30	Rachel Jackson 01772 682548
	0-5 years SEND Group	Sydney Street Neighbourhood Centre	Tuesday 16.00 – 17.00	VCFS led 01253 81571
Hyndburn	0-11 years SEND group SHINE	Great Harwood Neighbourhood Centre	Thursday 16.00 - 18.00	Aysha Begum 01254 880818
	12-25 years SEND Group SNAP	Hyndburn Zone	Thursday 18.45 - 20.45	Gillian Anson 07825112129
Lancaster	AOK SEND Stay and Play 0 - 11 years	Lune Park Neighbourhood Centre	Wednesday 13.00 – 15.00	Wenda Tyrer 01772 539444/ 539420
	ASD & SEND Youth Group 11 – 25 years	Morecambe Library	Wednesday 18.00 – 20.00	Wenda Tyrer 01772 539444/ 539420
Pendle	Colourful Voices SEND Group 12-25 years	Pendle Zone	Thursday 18.30 – 21.30	Tammy Tywang 01282 606333
Preston	Rainbows SEND Group	Riverbank Neighbourhood	Wednesday 9.45-11.30	Bev Jackson 01772 906770

## APPENDIX H

	0-5years	Centre		
	SEND Group 12-25years	Ashton Neighbourhood Centre	Friday 18.00 – 20.00	Cam May 01772 727032
Ribble Valley	0-11 years SEND Group	Ribble Valley Zone	Wednesday 16.30 -18.00	Emily Harrison 01200 443317
	Spring into Phab SEND Group  12-25 years	Ribble valley Zone	Monday 19.00 - 21.00	Elf Valinakis 01200 443317
Rossendale	0-11 years SEND Group  Clovers Group	Maden Centre	Every 3 <sup>rd</sup> Monday of the month 13.15 -14.25	Janet Whittaker 01706 237780
	12-19 years SEND Group  Stars	Rossendale Zone	Thursday 18.00 -21.00	Rachel Ferguson/ PaulWalsh 01706 242020
South Ribble	12-16 years SEND Group	South Ribble Zone	Friday 16.30 – 18.30	Helen Gardener 01772 426850
	16-25 years SEND Group - Unite	Walton Le Dale Neighbourhood Centre	Thursday 18.00 – 20.00	Helen Gardener 01772 426850
Wyre	0-11 years SEND Group	Flakefleet Neighbourhood Centre	Wednesday 15.30 – 17.30	Angela Spearpoint 01253 770682
	A Team 12- 25 years SEND Group	Wyre Zone	Monday 18.00 – 20.00	Michelle Beavers 01253770682

The details of this group work programme are well publicised at district level, through family based networks, partnership arrangements and social media.

Details are also available on the YouthZone 'What to Do' webpages on the council's website and the Family Information Network Directory.

Further information regarding these groups are also available from the WPEHS advice and support line, Talkzone, on 0800 51 11 11 or [talkzone@lancashire.gov.uk](mailto:talkzone@lancashire.gov.uk)

In order to deliver these sessions safely WPEHS staff are committed to undertaking suitable risk assessments designed to manage needs and ensure the appropriate involvement and access requirements of all group participants. It is expected that children aged 11 and under will be accompanied by a parent or carer.

Subject to an appropriate risk assessment young people aged 12 and above may attend group sessions unaccompanied subject to the following;

- The young person is ambulant.
- The young person has no personal care needs
- The young person does not require administration of medication

### **2. WPEHS SEND offer regarding parenting support/education programmes**

Parenting support is delivered by WPEHS through one to one targeted family support and group based programmes. These sessions are accessible to all parents and carers, including those whose children have SEND needs.

In addition, as part of the WPEHS targeted early help offer, **each district will deliver a parenting programme opportunity dedicated to parents and carers of children and young people with SEND at least once a year.**

These programmes will be tailored to meet the needs of families with SEND children/young people and will be advertised locally through the district 'What's On' Guides. Typically lasting between 10 to 12 weeks all courses will be delivered from a Neighbourhood Centre.

The WPEHS will identify families that may benefit from these courses from the caseloads held throughout the year in addition to publicising these courses locally. Access to these courses will also be available through referral via a Request for Support form.

### **3. WPEHS SEND offer regarding voice and influence**

WPEHS is committed to ensuring that our service provision is shaped by the views and experiences of children, young people and families.

The WPEHS actively promotes the involvement of children and young people with disabilities and their parents within wider engagement processes as part of a council's participation strategy. This includes promotion of the Lancashire POWAR group, Lancashire's participation council group for children and young people with special needs and disabilities and Lancashire's Youth Council for young people aged 12-19 (25) which operates at both District and County levels.

Locally all districts actively consult with service users and their families to receive feedback on service provision and to help shape the services that are delivered.

#### **4. WPEHS SEND offer regarding young people's transitions for learning, education and employment**

Supporting young people into positive destinations is a key outcome measure for both LCC and Schools. Continued support whilst pupils are in transition on leaving school is an essential element of the support provided to SEND young people. Upon receipt of a request for support form, WPEHS will work with vulnerable SEND young people ages 14 – 19yrs within the bandings A-E1 to contribute to multi-agency planning and support for key transitions in their education, employment or training.

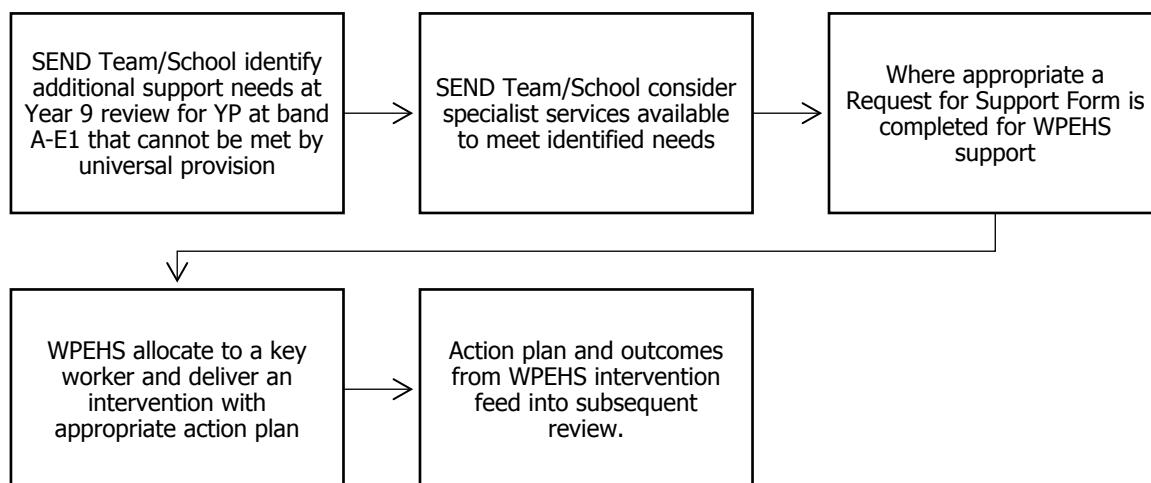
Schools and Further Education colleges have a statutory duty to provide all young people with independent careers guidance. The council works in local partnerships with schools, colleges and other partners to help develop the careers guidance offer they make through the Learning and Skills Team. The WPEHS work closely with the education and skills providers to inform its targeted support offer to young people with regard to;

- Capturing information about the intended destinations of SEND young people during year 11 in order to inform alignment of young people's intentions with the types and quantity of post 16yrs offers made available by colleges and training providers.
- Tracking the current destination of SEND young people in response to raising participation age
- Reducing the numbers of SEND young people who are not in education, employment and training, vulnerable to being so, or whose current destination is not known.
- Capturing through tracking the offer made available to SEND young people at the beginnings of Year 12 and 13 (September Guarantee)

The council is committed to paying particular attention to children and young people with SEND, who are significantly less likely to participate than their peers without SEND, and provide targeted support where needed. Where individual schools identify that a particular young person with SEND requires additional targeted support this can be requested by completing a 'Request for Support' form which will be assessed by WPEHS to see if appropriate support can be offered by the WPEHS at an early help level. Requests for Support for young people with SEND will be allocated to a qualified WPEHS worker who will provide a targeted intervention for a period of up to 12 weeks to address identified unmet needs that are not part of some other partners agencies remit of intervention. Where SEND young people are in receipt of targeted support WPEHS workers may attend and contribute to the SEND reviews and Education, Health and Care Plan assessments.

Requests for Support forms are available at [Lancashire Children's Trust - - Request for Support Form](#) and should be submitted to [preventionearlyhelp@lancashire.gov.uk](mailto:preventionearlyhelp@lancashire.gov.uk)

## APPENDIX H



Universal information advice and guidance is additionally available via virtual and digital support, which can be accessed through the 'Talkzone' service via telephone, email, SMS text and social media (principally facebook and twitter). This service provides a foundation stone for access, being available 365 days per year, 2pm to 10pm.

### **5. WPEHS SEND offer regarding multi-agency working and pathways**

The WPEHS is committed to ensuring clear information sharing processes and pathways with Health, Education and Social Care with respect to children and young people with SEND and their families to support the early identification of developmental delay or SEND, to be responded to at the appropriate level and by the appropriate agency.

Targeted support is available to families' assessed using Lancashire's Common Assessment Framework (CAF) as having more complex or intensive needs aligned to Lancashire's Revised Continuum of Need (CoN) at Level 2.

The WPEHS key workers will work as part of a 'team around the family' and will undertake the Lead Professional role where appropriate within their caseloads.

The WPEHS recognises and interfaces with other appropriate assessment tools used by key partners and will work in partnership to provide focused and coordinated early help interventions as part of agreed actions identified within the Education Health Care Plan or Review Action Plans.

Support can be requested by completing a 'Request for Support' form which will be assessed by WPEHS to see if appropriate support can be offered by the WPEHS at an early help level.

## APPENDIX H

Where Children's Social Care identify families with children and young people with profound disabilities who would benefit from the targeted family support that WPEHS can provide this can be accessed via completion of a Request for Support form.

Requests for Support forms are available at [Lancashire Children's Trust - - Request for Support Form](#) and should be submitted to [preventionearlyhelp@lancashire.gov.uk](mailto:preventionearlyhelp@lancashire.gov.uk)





### The Risk Sensible Approach

The Risk Sensible model sets out a way in which practitioners work with families to identify and manage need and risk at an appropriate level and ensure children and young people are safeguarded against significant harm. It challenges the culture of working in a risk averse way and provides a framework to address this that supports assessment, analysis and management of risk.

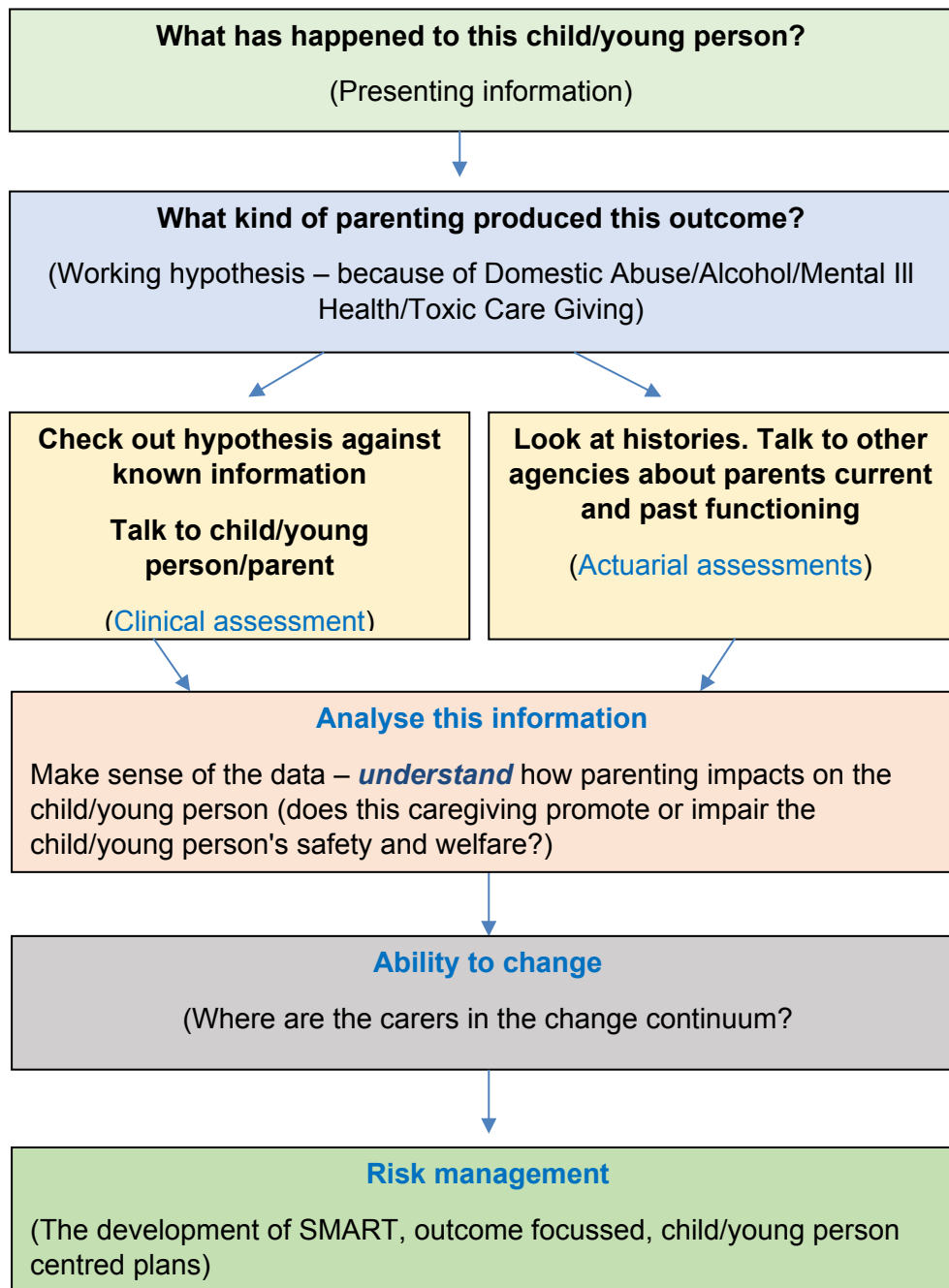
The model provides a common language amongst practitioners to talk about risk, introducing High Risk Indicators and Low Risk Factors as a core part of the model. The model focusses on the following areas;

**Risk Assessment:** The collection of information about children and families by clinical and actuarial means. This is completed through the process of enquiry, observation and communication with others.

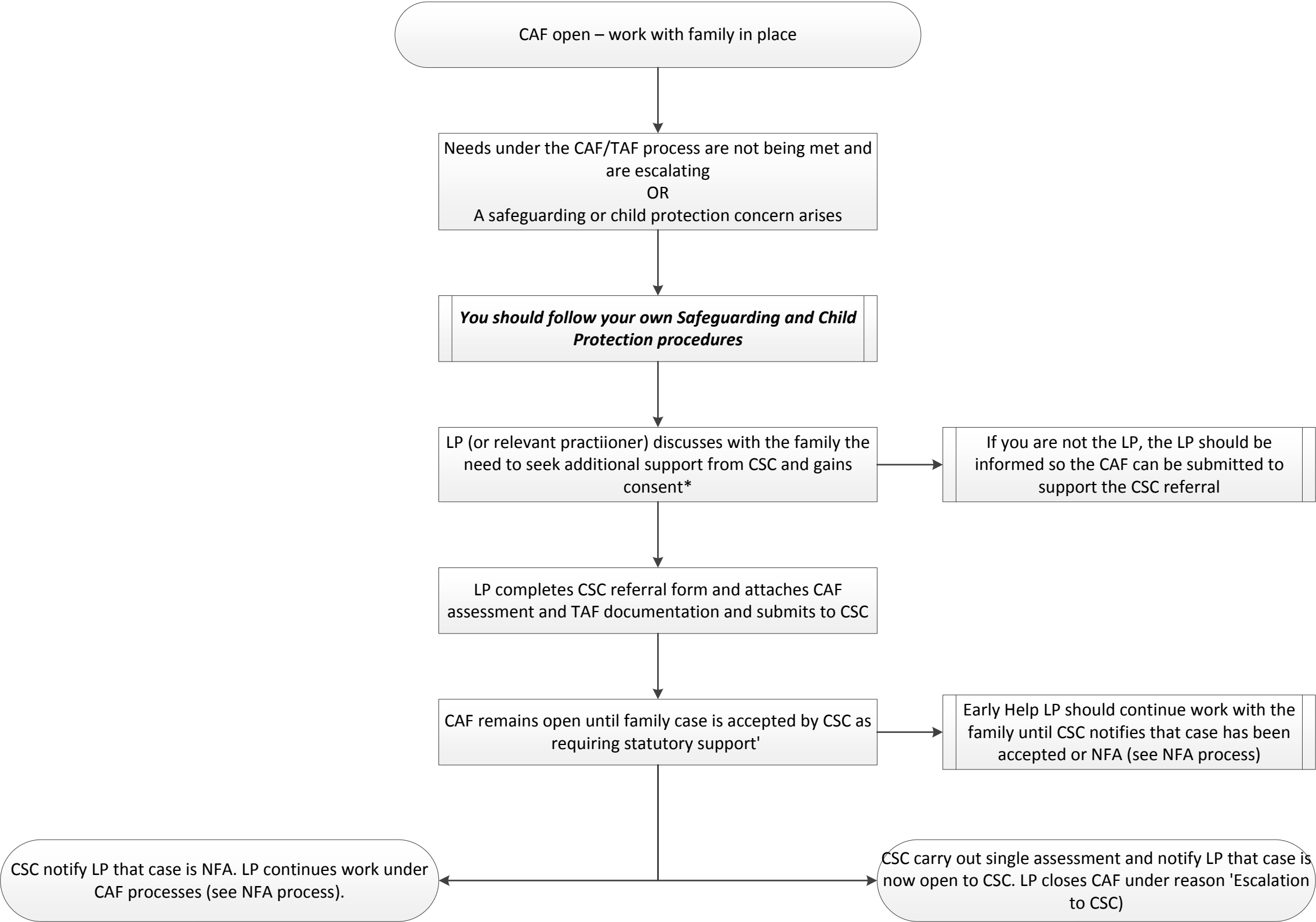
**Risk Analysis:** Making sense of the data - the process of evaluating the impact of the child's exposure to the risk of harm and taking account of individual/family strengths and agency services that could reduce the likelihood of future harm.

**Risk Management:** The statement of SMART plans and the allocation of responsibilities for translating the outcomes of risk assessments and analysis into practical measures to reduce risk.

## How the Risk Sensible Model Works



Step Up to CSC Process with Open CAF



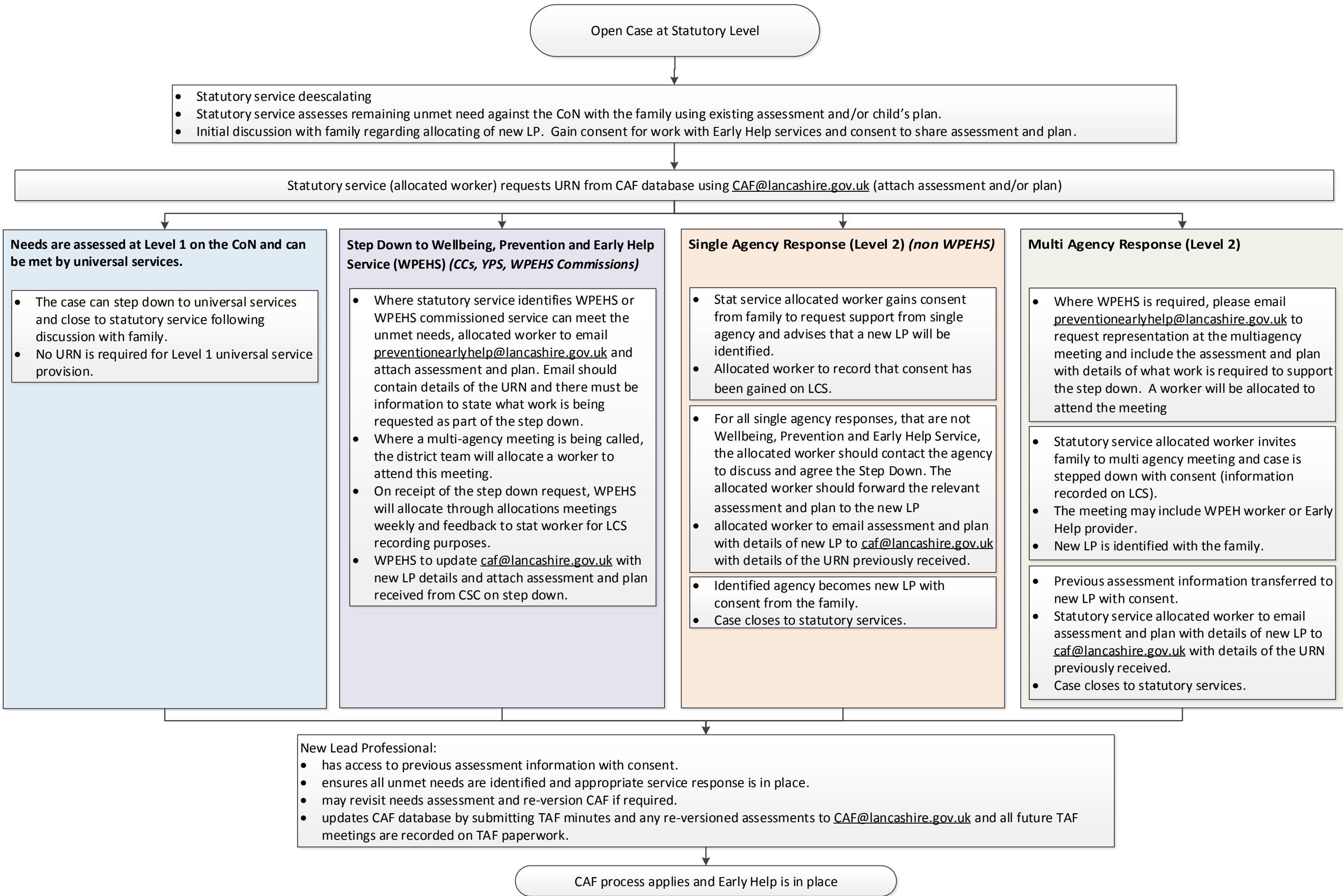
**\*Where a child or young person is at risk of significant harm, a referral to children's social care can be made without consent from the family.**

**Where there are immediate safeguarding of child protection concerns and there is no CAF open, the CSC referral form can be completed and submitted without a CAF.**



# Statutory Service\* Step Down Process (District)

\*Statutory Service refers to Children's Social Care and YOT



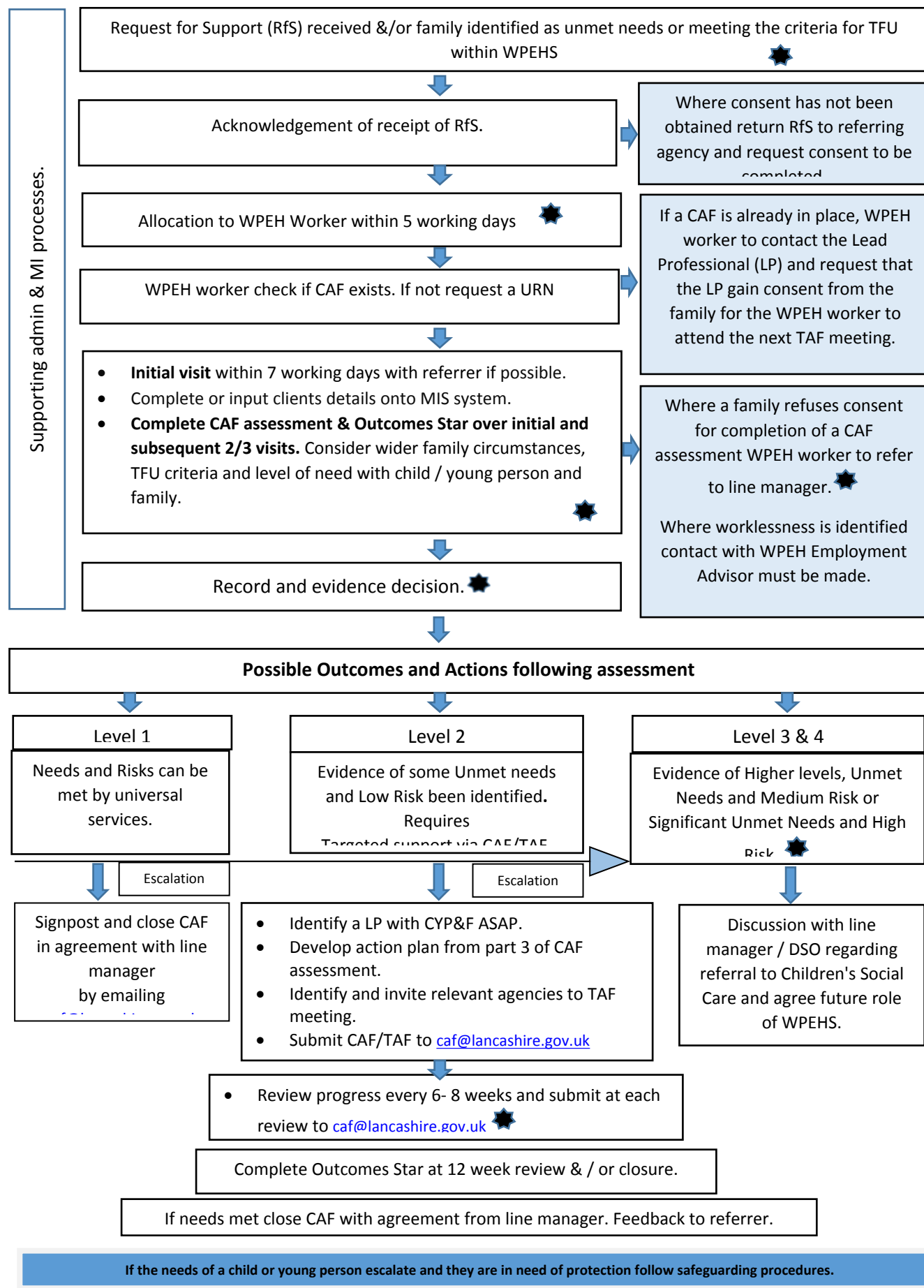


# Lancashire Wellbeing, Prevention and Early Help Service

## Flowchart for delivery of targeted Wellbeing, Prevention and Early Help Services with Children / Young People and Families.

★ = Management Checkpoint.

Recording. Caseload Management. Quality Assurance. Workforce Development.







## WELLBEING, PREVENTION AND EARLY HELP SERVICE

### COMMISSIONED SERVICES

The purpose of the commissioned offer is to provide additional, specialist support to children, young people and their families showing some unmet needs.

The commissioned services available for 2017/18 are;

- **Emotional Health and Well Being:** to be delivered countywide by the Child Action North West Partnership
- **Domestic Abuse:** to be delivered countywide by Victim Support

Service delivery will commence on 1<sup>st</sup> April 2017 through referral to the Wellbeing, Prevention and Early Help Service using the Request for Support form (accessible from the [Lancashire Children's Trust](#)). Information outlining the types of support available from providers is available on pages 2 and 3 of this document. Please note that this is not a full and extensive list of support available and it may be worth contacting your local WPEHS Team Leader for further information.

**To access the services, complete a [request for support form](#) and send to the central WPEH mailbox [preventionearlyhelp@lancashire.gov.uk](mailto:preventionearlyhelp@lancashire.gov.uk)**

#### Contacts

If you have any queries relating to accessing commissioned services for children, young people and their families then please contact your local WPEHS Team Leader (see page 4 of this document for full contact details).

If you have any queries relating to the commissioning of these services then please contact the central WPEH mailbox: [preventionearlyhelp@lancashire.gov.uk](mailto:preventionearlyhelp@lancashire.gov.uk)

**WHAT IS BEING DELIVERED BY COMMISSIONED PROVIDERS?****Emotional Health and Wellbeing  
(Child Action North West  
Partnership )**

*Click on the icon below for  
additional information on the  
service*



Emotional Health  
and Wellbeing Com

The service is delivered by the Child Action North West Partnership to children, young people and families at level **2, 3 and 4** on the Lancashire Continuum of Need

The delivery model includes five separate strands;

1. Triage, Assessment & Action Map
2. Building Resilience (Core theme across all interventions)
3. Whole Family Support (Rapid Support)
4. Therapeutic Support
5. Community & Peer Support (Sustained Development)

Services that CYP may receive under this commission may include; (this is not an exhaustive list)

Anxiety	Self- harm
Depression and low mood	Confidence and self-esteem
Bereavement, loss and separation	Emotional regulation
Sexual identity	Therapeutic Group Work
One to one person/humanistic centred counselling	Play Therapy
Systemic Family Therapy	Drama Therapy
Resilience Therapy	Child sexual exploitation
NLP	Anxiety and depression
CBT	Body image/disordered eating
Relationship counselling	Solution focused therapy
Attachment issues	



Lancashire Victim  
Services.pdf

Victim Support Lancashire is the lead organisation that will provide a new service for victims, on behalf of Lancashire's Police and Crime Commissioner (PCC).

Four local 'Multi Crime' teams will provide specialist support to victims of all crime types across Lancashire, regardless of whether or not it's been reported to the police. The support will be structured around helping people to cope and recover from crime.

These teams will cover the Fylde coast; Lancaster and rural; East Lancashire and South and Central. Services will be available Monday to Friday, from 8am till 8pm, with out-of-hours cover.

## WELLBEING, PREVENTION AND EARLY HELP COMMISSIONED OFFER PROVIDERS BY DISTRICT

The contacts below show the name of the provider in the district and the operational contact for that service.

	Countywide	
Emotional Health and Wellbeing	Child Action North West Partnership	
Domestic Abuse	Victim Support	DV/SV Operations Manager: <a href="mailto:Dee.conlon@victimsupport.org.uk">Dee.conlon@victimsupport.org.uk</a>

## WPEHS LOCALITY MANAGERS AND TEAM LEADERS BY DISTRICT

District	Name	Role	Telephone
Burnley and Pendle	Lesley Morville <a href="mailto:lesley.morville@lancashire.gov.uk">lesley.morville@lancashire.gov.uk</a> Sue Hopkinson <a href="mailto:susan.hopkinson@lancashire.gov.uk">susan.hopkinson@lancashire.gov.uk</a> Debs Cardwell <a href="mailto:Deb.cardwell@lancashire.gov.uk">Deb.cardwell@lancashire.gov.uk</a>	WPEH Locality Manager – Burnley & Pendle WPEH Team Leader- Burnley WPEH Team Leader - Pendle	07817 622417 07971 845709 07919 227476
Lancaster, Fylde and Wyre	Judith Thomas <a href="mailto:judith.thomas@lancashire.gov.uk">judith.thomas@lancashire.gov.uk</a> Wenda Tyrer <a href="mailto:wenda.tyrer@lancashire.gov.uk">wenda.tyrer@lancashire.gov.uk</a> John Tully <a href="mailto:john.tully@lancashire.gov.uk">john.tully@lancashire.gov.uk</a> Rachel Green <a href="mailto:Rachel.green2@lancashire.gov.uk">Rachel.green2@lancashire.gov.uk</a>	WPEH Locality Manager – Lancaster, Fylde & Wyre WPEH TeamLeader – Lancaster WPEH Team Leader – Fylde WPEH Team Leader - Wyre	07887 831606 07795 222729 07824 434355 07919 227474
Hyndburn, Ribble Valley and Rossendale	Nighat Parveen <a href="mailto:nighat.parveen@lancashire.gov.uk">nighat.parveen@lancashire.gov.uk</a>  Alison Lorente <a href="mailto:Alison.lorente@lancashire.gov.uk">Alison.lorente@lancashire.gov.uk</a> Gillian Lander <a href="mailto:Gillian.lander@lancashire.gov.uk">Gillian.lander@lancashire.gov.uk</a> Stephanie Shorrocks <a href="mailto:Stephanie.shorrocks@lancashitre.gov.uk">Stephanie.shorrocks@lancashitre.gov.uk</a>	WPEH Locality Manager – Hyndburn, Ribble Valley & Rossendale WPEH Team Leader – Hyndburn WPEH Team Leader - Rossendale WPEH Team Leader – Ribble Valley	07967 053376  07836 612403 07766 803614 07766 582864

## Appendix M

<b>District</b>	<b>Name</b>	<b>Role</b>	<b>Telephone</b>
Preston	Ellie Waide <a href="mailto:ellie.waide@lancashire.gov.uk">ellie.waide@lancashire.gov.uk</a> Christine Nuttall <a href="mailto:Christine.nuttall2@lancashire.gov.uk">Christine.nuttall2@lancashire.gov.uk</a>	WPEH Locality Manager- Preston WPEH Team Leader - Preston	07872 517557 07976 395410
Chorley, South Ribble and West Lancs	Tim Grose <a href="mailto:tim.grose@lancashire.gov.uk">tim.grose@lancashire.gov.uk</a>  Laura Davidson <a href="mailto:laura.davidson@lancashire.gov.uk">laura.davidson@lancashire.gov.uk</a> Joanne McGrath <a href="mailto:joanne.mcgrath@lancashire.gov.uk">joanne.mcgrath@lancashire.gov.uk</a> Jo Latham <a href="mailto:joanne.latham2@lancashire.gov.uk">joanne.latham2@lancashire.gov.uk</a>	WPEH Locality Manager- Chorley, South Ribble, West Lancs WPEH Team Leader- West Lancs WPEH Team Leader - South Ribble WPEH Team Leader - Chorley	07584 217752  07876 844365 07817 623290 07876 844361



## **Children's Services Scrutiny Committee**

Meeting to be held on Wednesday, 26 July 2017

Electoral Divisions affected: All
--------------------------------------

## **Children's Services Scrutiny Committee Work Plan 2017/18**

(Appendices A, B, C, D and E refer)

Contact for further information:

Samantha Parker, 01772 538221, Senior Democratic Services Officer (Overview and Scrutiny), sam.parker@lancashire.gov.uk

### **Executive Summary**

The Plan at Appendix 'A' is the work plan for the Children's Services Scrutiny Committee for the 2017/18 municipal year.

The topics included were identified at the work planning workshop held on 21 June 2017.

### **Recommendation**

The Children's Services Scrutiny Committee is asked to:

- i. Note and comment on the report;
- ii. Confirm the topic(s) to be considered at the next scheduled meeting; and
- iii. Discuss and identify information required for each topic to be considered at the next scheduled meeting

### **Background and Advice**

A statement of the work to be undertaken and considered by the Children's Services Scrutiny Committee for the remainder of the 2017/18 municipal year is set out at Appendix A. The work plan is presented to each meeting for information.

The Committee is asked to confirm the topic(s) to be considered at the next scheduled meeting on 6 September 2017. The Committee is also asked to make suggestions on the information they would like to receive as part of the report.

In addition, the Committee are requested to note and comment on the work plans included for all other Scrutiny Committees as set out in Appendices B through to E (Education, External Services and Health and Internal).

**Consultations**

N/A

**Implications:**

This item has the following implications, as indicated:

**Risk management**

This report has no significant risk implications.

**Local Government (Access to Information) Act 1985  
List of Background Papers**

Paper	Date	Contact/Directorate/Tel
-------	------	-------------------------

N/A

Reason for inclusion in Part II, if appropriate

N/A



## Children's Services Scrutiny Committee – Work Plan 2017/18

Date to Committee	Report	Lead Officers	Outline reasons for scrutiny/scrutiny method
26 July 2017	Wellbeing, Prevention and Early Help Service (WPEHs) – Overview	Debbie Duffell	Overview of WPEHs offers in particular – the early offer and universal services accessibility - identification of any gaps in provision around the Continuum of Need, CAF, children's centres, partnership and integrated working challenges, CAMHS, MASH
6 September 2017	New SEND Pathway	Brendan Lee	Overview
	Medicine management in schools	Brendan Lee	Reviewing the impact of withdrawing School nurses from special schools
	Ofsted feedback	Amanda Hatton	Following monitoring visit in July
18 October 2017	Homelessness of young people	TBC	District level data – who do we pay? Who do we work with? What's the accommodation offer? And links with CAMHS
	Tracking of Care Leavers	Audrey Swann?	Overview of new process
	Youth Accommodation for LAC	TBC	Care leavers and accommodation issues – what's the offer? Is it up to standard?
	LSCB Annual Report – feedback and issues identified	Jane Booth/Victoria Gibson	To note and provide feedback and to identify any areas for review
6 December 2017	Children in secure accommodation – out of area	Sally Allen/David Hynes	Exit strategies and update on Audit exercise
	Children's social worker	Amanda Hatton/Tracy	Update on the ongoing challenges

## Children's Services Scrutiny Committee – Work Plan 2017/18

Date to Committee	Report	Lead Officers	Outline reasons for scrutiny/scrutiny method
	recruitment and retention challenges (strategy and support)	Poole-Nandy	
	Buildings and accommodation for social workers	Tracy Poole-Nandy	Overcrowding, access to IT equipment and lack of desk space for social workers
31 January 2018	New models of delivery (overspend on children's social care)	Amanda Hatton? Neil Kissock	Overview of New Models of Delivery in response to overspend on Children's Services
	Budget proposals	Neil Kissock	Budget Proposals from Susie Charles – Cabinet Member for Children, Young People and Schools
14 March 2018	Criteria for EHCP and the role of Local Moderating Panels	Brendan Lee	Overview of the criteria and the role of Local Moderating Panels
	EHCP progress update	Brendan Lee	Update on progressing with conversions
11 April 2018	Children's Partnership Boards	Clare Platt	Review of the Boards effectiveness and their future
22 May 2018	tbc		

**Children's Services Scrutiny Committee – Work Plan 2017/18**

**Potential topics for the Committee:**

-



## Education Scrutiny – Work plan 2017/18

Date to Committee	Report	Lead Officers	Outline reasons for scrutiny/scrutiny method
26 September 2017	Implementation of the School Places Provision Strategy (Basic Need funding and S106 funding)	Mel Ormesher	Overview and update on basic need funding and the allocation of S106 funding
	Summer Born Policy	Debbie Ormerod	Overview on the Policy and Implementation of deferred/delayed places
	School Admissions Appeals	Angela Esslinger and Debbie Ormerod	Report on the effectiveness of the service for parents and schools
	SEND Transport Policy 2013/14	Brendan Lee	Overview on the policy
28 November 2017	Foundation Stage Standards and level of progress through each Key Stage	Steve Belbin	Tracking progression of pupil attainment through the key stages
	GCSE Performance	Steve Belbin	Data report
	LAC Attainment	tbc	Narrowing the gap of attainment
	Elective Home Education	tbc	Overview report on the service, attainment and take up
27 March 2018	Personal Education Plans	tbc	Overview of the process, how they are being progressed and risk management

**Education Scrutiny – Work plan 2017/18**

**Potential topics for the Committee:**

- TA to teacher career path initiatives
- Recruitment and retention of teachers (support and strategy)
- School attendance – missing from home and education

## External Services Scrutiny – Work plan 2017/18

Date to C'ttee	Report	Lead Officers	Outline reasons for scrutiny/scrutiny method
25 July 2017	Safer Lancashire – Community Safety Partnerships (CSP)	Clare Platt, Debbie Thompson, Angela Harrison, Robert Ruston	Overview report of CSPs across Lancashire and their priority areas for 2017/18
10 October	Franklaw Event – Drinking Water Inspectorate (DWI)* tbc	Sue Pennison, DWI	Report on the Franklaw Water Treatment Works Summer 2015 water contamination event
16 January 2018	Lancashire Enterprise Partnership (LEP) tbc	Martin Kelly	Report on the LEP
24 April	tbc tbc		

\*= Provisional

## Statutory requirements:

- Crime and Disorder Partnerships/Community Safety Partnerships
- Flooding (flood risk management functions or coastal erosion risk management functions)

## Potential external organisations/topics for the Committee:

- United Utilities – capacity of sewers, new housing developments, reservoir capacity and chalk streams

Continued...

**External Services Scrutiny – Work plan 2017/18**

- Electricity North West
- Flooding – Lancashire County Council and Environment Agency
- Arriva/Northern Rail – transforming rail in the north
- Lancashire's Universities
- Third sector – One Lancashire
- Local Member Grants
- Bus services
- Partnerships – BTLS, Road Safety, Resilience Forum
- Fire Authority
- Traded services – Travelcare, school catering, Lancashire Teaching Agency, Outdoor Education
- Business rates – new funding formula and the County Council
- Future of Local Government (Lancashire County Council) by 2020



## Heath Scrutiny – Work plan 2017/18

Date to C'ttee	Report	STP Governance Meeting Workstream*/Priority area**	Lead Officers (including STP SRO)	Outline reasons for scrutiny/scrutiny method
24 July	STP Workforce – Scrutiny Inquiry Day Report	Workforce*	CC Steve Holgate, former Chair of the Health Scrutiny Committee	To formulate recommendations from the report and to determine who to circulate to.
	Update on the Local Workforce Action Board	Workforce*	Heather Tierney-Moore and Damian Gallagher, LCFT	Update on the work of the Board.
	Chorley Hospital Emergency Department mobilisation	Workforce*/Hospitals** and Urgent Care**	Karen Partington, Mark Pugh, LTHFT	Update on the mobilisation of the Emergency Department and recruitment issues
19 Sept	Next Steps on the NHS Five Year Forward View – Sustainability and Transformation Partnerships; Accountable Care Systems and Local Delivery Plans	-	NHSE North, Healthier Lancashire and South Cumbria, Fylde and Wyre CCG, Morecambe Bay CCG,	Overview of the next steps on the NHS five year forward view and update on the Accountable Care System.
31 Oct	Winter pressures and preparations (A&E)	All	Heather Tierney-Moore (AEDB), NWAS, LTHFT.	Overview of pressures and preparations.

Date to C'ttee	Report	STP Governance Meeting Workstream*/Priority area**	Lead Officers (including STP SRO)	Outline reasons for scrutiny/scrutiny method
12 Dec	Mental Health	Care Professional Board* Mental Health**	LCFT tbc	Focus on <ol style="list-style-type: none"> <li>In-patient provision across Lancashire</li> <li>Community mental health; early intervention and prevention</li> </ol>
	Suicide Prevention	Care Professional Board* Mental Health**	tbc	To assess suicide prevention plans
23 Jan 2018	Adult Social Care – and Public Health Budget Proposals	-	Tony Pounder, Dr Sakthi Karunanithi and Neil Kissock	Budget proposals from the following Cabinet Members: <ul style="list-style-type: none"> <li>Graham Gooch – Adult Services</li> <li>Vivien Taylor – Health and Wellbeing</li> </ul>
	Delayed Transfers of Care	Care Professional Board*	Tony Pounder, LTHFT	Overview and update on DTOC and discharge policies

Date to C'ttee	Report	STP Governance Meeting Workstream*/Priority area**	Lead Officers (including STP SRO)	Outline reasons for scrutiny/scrutiny method
5 March	Public Health - Life expectancy	Care Professional Board* Prevention**	Dr Sakthi Karunanithi	Overview of Life Expectancy, causes, prevention and self-help work, key service issues, challenges and opportunities
	Learning disabilities (Calderstones)	Care Professional Board* Health and social care**, Mental Health**	Mersey Care NHS Foundation Trust	Update on Specialist Learning Disability Services
17 April	Skin cancer awareness	Care Professional Board* Prevention**	Sofiane Rimouche, LTHFT, Dr Sakthi Karunanithi	Raising awareness, prevention

**Potential topics for the Committee and its Steering Group:**

- Data sharing
- Dementia awareness
- Care Home Quality

## Heath Scrutiny Steering Group – Work plan 2017/18

Date to C'ttee	Report	Lead Officers	Outline reasons for scrutiny/scrutiny method
4 July 2017	<ul style="list-style-type: none"> <li>i. Royal Preston Hospital – bid for new primary care front end at Emergency Department and Urgent Care Centre (A&amp;E)</li> <li>ii. WLCCG – Termination of single handed GP contract</li> <li>iii. FWCCG – Improving health services in Kirkham and Wesham</li> </ul>	<ul style="list-style-type: none"> <li>i. Stephen Gough and David Armstrong, NHS England – Lancashire</li> <li>ii. Jackie Moran, WLCCG</li> <li>iii. Kate Hurry and Andrew Harrison, FWCCG</li> </ul>	<ul style="list-style-type: none"> <li>i. Unique bid for capital – need to identify appropriate funding stream to expedite and assist with overall A&amp;E function</li> <li>ii. To receive updates on progress – wider concerns around single handed GPs in Lancashire</li> <li>iii. Overview of the proposals – concerns also raised by local councillor</li> </ul>
27 Sept	<ul style="list-style-type: none"> <li>i. Our Health, Our Care Local Delivery Plan (LDP)</li> <li>ii. Proposal for a Central Lancashire Mental Health Inpatient Unit</li> </ul>	<ul style="list-style-type: none"> <li>i. Jan Ledward, GPCCG + CSRCCG</li> <li>ii. Steve Winterson, LCFT</li> </ul>	<ul style="list-style-type: none"> <li>i. Updates on progress relating to Solution Design Events and the LDP</li> <li>ii. Overview of proposals</li> </ul>
11 Oct	<ul style="list-style-type: none"> <li>i. VirginCare – Community Health and Urgent Care Services Contract</li> <li>ii. Health and Wellbeing Board (HWB) – Update</li> <li>iii. Update on the completion of the new primary care front-end at Royal Preston Hospital</li> </ul>	<ul style="list-style-type: none"> <li>i. Jackie Moran, WLCCG</li> <li>ii. Sakthi Karunanithi, LCC</li> <li>iii. Stephen Gough and David Armstrong, NHS England – Lancashire</li> </ul>	<ul style="list-style-type: none"> <li>i. Update on contract awarded to private provider</li> <li>ii. Update on HWB Partnerships</li> <li>iii. Update – briefing note/attendance at meeting</li> </ul>
15 Nov	<ul style="list-style-type: none"> <li>i. Adult Social Care and Registered Care Managers Network (RCMN)</li> </ul>	<ul style="list-style-type: none"> <li>i. Tony Pounder, LCC and Paul Simic,</li> </ul>	<ul style="list-style-type: none"> <li>i. To receive updates regarding the Health and Social Care Partnership Steering</li> </ul>

Date to C'ttee	Report	Lead Officers	Outline reasons for scrutiny/scrutiny method
		LCA	Group and RCMN meetings
6 Dec	i. Better Care Together	i. Morecambe Bay CCG	i. Update on the Bay Health and Care Partners LDP and outcomes of Trust Boards in relation to integrated hospital community and primary care services (Integrated Care Communities ICC).
10 Jan 2018	i. Quality Accounts for Trusts	i. Steering Group and Healthwatch Lancashire	i. To formulate responses to requests from Trusts on their Quality Accounts
7 Feb			
14 Mar			
11 Apr			
16 May			

Potential topics for Steering Group:

- Pharmacies and prescriptions – volume of returned medicines and disposal of same, failure to collect, patient medicine reviews, change to current practice
- Low priority prescribing – consultations across CCGs - update
- Update from NWAS
- Capital investments across Lancashire

**Internal Scrutiny Committee Work Plan 2017/18**

**28.6.17**

<b>Date to Committee</b>	<b>Report</b>	<b>Lead Officers</b>	<b>Outline reasons for scrutiny/scrutiny method</b>
<b>21 July 2017</b>	LA funding	Steve Browne	To ascertain the funding streams and mechanisms that the County Council is subject to
	RIPA	Ian Young	Annual report of the Regulation of Investigatory Powers Act 2000 activities
<b>22 September 2017</b>	Statutory and non-statutory services	Steve Browne	To also include what the council currently doesn't do but if it did could potentially save money in the future
	Income generation	Steve Browne	Report on the current and potential income streams of the county council
<b>17 November 2017</b>	TAMP	Mel Ormesher	Update
	Winter gritting	tbc	Preparedness
	Highway verges	tbc	Grass cutting
	Street lighting	tbc	Energy spend

<b>19 January 2018</b>	Council budget	tbc	Budget proposals from the following Cabinet Members: <ul style="list-style-type: none"> <li>• Michael Green – Economic Development &amp; Planning</li> <li>• Keith Iddon – Highways and Transport</li> <li>• Peter Buckley – Community &amp; Cultural Services</li> <li>• Leader &amp; Deputy Leader</li> </ul>
<b>16 March 2018</b>	Civil Contingencies	tbc	Information relating to risk
	Emergency resilience	Alan Wilton	Update on the preparedness of the county council
	Libraries	tbc	Update on the progress of the re-opening of libraries
<b>18 May 2018</b>	Economic Development	tbc	Skills and apprenticeships – gaps post 18
	Household Waste Recycling Centres	tbc	Changes and risks Recycling
<b>Other topics not yet scheduled</b>	Enforcement of planning controls		
	Risk management – risk register		
	Countryside matters		
	Update on planning matters		
	LSAB Annual Report		